


Recombinant Human PDCD1 protein, His-Avi-tagged, Biotinylated

Cat. No. PDCD1-259H **Lot. No.** (See product label)

SPECIFICATION

Product Overview	Biotinylated Recombinant Human PDCD1 protein(Q15116-1)(Leu25-Gln167), fused with C-terminal His and Avi tag, was expressed in HEK293.
Species	Human
Source	HEK293
ProteinLength	Leu25-Gln167
Tag	C-His-Avi
Conjugation/Label	Biotin
Form	Lyophilized from 0.22µm filtered solution in PBS (pH 7.4). Normally 8% trehalose is added as protectant before lyophilization.
Bio-activity	Immobilized Biotinylated Human PD-1, His Tag at 1ug/ml (100ul/Well) on streptavidin (5ug/ml) precoated plate. Dose response curve for Human PD-L1, hFc Tag with the EC50 of 23.5ng/ml determined by ELISA (QC Test).
Molecular Mass	The protein has a predicted MW of 18.9 kDa. Due to glycosylation, the protein migrates to 40-50 kDa based on Tris-Bis PAGE result.
Endotoxin	Less than 1EU per µg by the LAL method.

 Tel: 1-631-559-9269 1-516-512-3133


 Email: info@creative-biomart.com  Fax: 1-631-938-8127

 45-1 Ramsey Road, Shirley, NY 11967, USA

Purity	> 95% as determined by Tris-Bis PAGE;> 95% as determined by HPLC
Storage	Reconstituted protein stable at -80°C for 12 months, 4°C for 1 week. Use a manual defrost freezer and avoid repeated freeze-thaw cycles.
Reconstitution	Centrifuge tubes before opening. Reconstituting to a concentration more than 100 µg/ml is recommended. Dissolve the lyophilized protein in distilled water.
Conjugation	Biotin

GENE INFORMATION

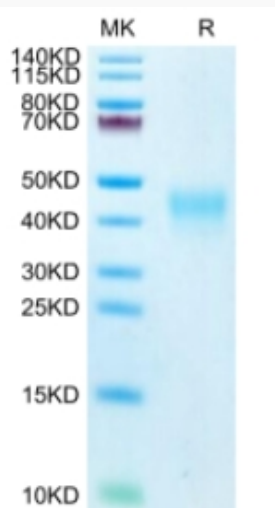
Gene Name	PDCD1 programmed cell death 1 [Homo sapiens]
Official Symbol	PDCD1
Synonyms	PDCD1; programmed cell death 1; programmed cell death protein 1; CD279; PD1; protein PD-1; PD-1; SLEB2; hPD-1; hPD-I;
Gene ID	5133
mRNA Refseq	NM_005018
Protein Refseq	NP_005009
MIM	600244
UniProt ID	Q15116

 Tel: 1-631-559-9269 1-516-512-3133

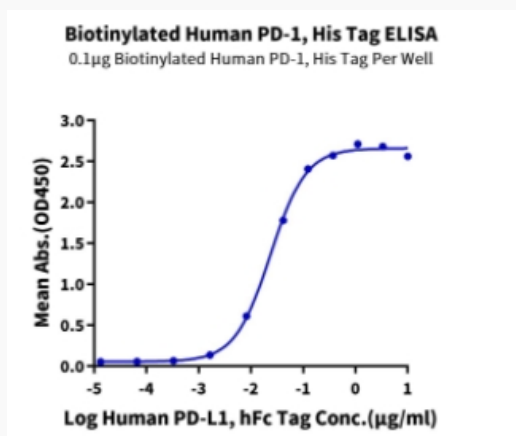
 Email: info@creative-biomart.com  Fax: 1-631-938-8127

 45-1 Ramsey Road, Shirley, NY 11967, USA

Tris-Bis PAGE



ELISA Data



Tel: 1-631-559-9269 1-516-512-3133

Email: info@creative-biomart.com Fax: 1-631-938-8127

45-1 Ramsey Road, Shirley, NY 11967, USA