

Recombinant Human PTH1R protein, His-tagged

Cat. No. PTH1R-7006H **Lot. No.** (See product label)

SPECIFICATION

| | |
|-----------------------------|---|
| Product Overview | Recombinant Human PTH1R (Asp27-Gly188) protein was fused to His-tag at C-terminus and expressed in human 293 cells (HEK293). |
| Species | Human |
| Source | HEK293 |
| ProteinLength | Asp27-Gly188 |
| Description | Parathyroid hormone/parathyroid hormone-related peptide receptor is also known as Parathyroid hormone 1 receptor (PTH1R), PTHR1, PTH/PTHrP type I receptor (PTH/PTHr receptor), which belongs to the G-protein coupled receptor 2 family. PTH1R/PTHR1 is a receptor for parathyroid hormone and for parathyroid hormone-related peptide. The activity of this receptor is mediated by G proteins which activate adenylyl cyclase and also a phosphatidylinositol-calcium second messenger system. |
| Predicted N Terminal | Asp27 |
| Form | Lyophilized from 0.22 µm filtered solution in PBS, pH7.4, 10% trehalose. |
| Molecular Mass | The protein has a calculated MW of 19.3 kDa. The protein migrates as 27-43 kDa under reducing (R) condition (SDS-PAGE) due to different glycosylation. |
| Endotoxin | Less than 1.0 EU per µg by the LAL method. |

 Tel: 1-631-559-9269 1-516-512-3133

 Email: info@creative-biomart.com  Fax: 1-631-938-8127

 45-1 Ramsey Road, Shirley, NY 11967, USA

| | |
|-------------------------|--|
| Purity | >85% as determined by SDS-PAGE. |
| Storage | <p>For long term storage, the product should be stored at lyophilized state at -20 centigrade or lower.</p> <p>Please avoid repeated freeze-thaw cycles.</p> <p>This product is stable after storage at:</p> <p>-20 to -70 centigrade for 12 months in lyophilized state;</p> <p>-70 centigrade for 3 months under sterile conditions after reconstitution.</p> |
| Reconstitution | It is recommended that sterile water be added to the vial to prepare a stock solution of 0.2 ug/ul. Centrifuge the vial at 4°C before opening to recover the entire contents. |
| GENE INFORMATION | |
| Gene Name | PTH1R |
| Official Symbol | PTH1R |
| Synonyms | PTH1R; parathyroid hormone 1 receptor; parathyroid hormone receptor 1 , PTHR, PTHR1; parathyroid hormone/parathyroid hormone-related peptide receptor; PTH1 receptor; PTH/PTHr receptor; PTH/PTHrP type I receptor; parathyroid hormone receptor 1; seven transmembrane helix receptor; parathyroid hormone/parathyroid hormone-related protein receptor; PFE; PTHR; PTHR1; MGC138426; MGC138452 |
| Gene ID | 5745 |
| mRNA Refseq | NM_000316 |
| Protein Refseq | NP_000307 |
| MIM | 168468 |

 Tel: 1-631-559-9269 1-516-512-3133

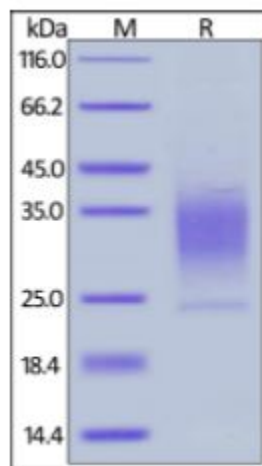
 Email: info@creative-biomart.com  Fax: 1-631-938-8127

 45-1 Ramsey Road, Shirley, NY 11967, USA

UniProt ID

Q03431

SDS-PAGE of
PTH1R-7006H



Human PTH1R, His Tag on SDS-PAGE under reducing (R) condition. The gel was stained overnight with Coomassie Blue. The purity of the protein is greater than 85%.

Tel: 1-631-559-9269 1-516-512-3133

Email: info@creative-biomart.com Fax: 1-631-938-8127

45-1 Ramsey Road, Shirley, NY 11967, USA