

Recombinant Human S100A6 protein

Cat. No. S100A6-3101H **Lot. No.** (See product label)

SPECIFICATION

Product Overview	Recombinant Human S100A6 (Met1-Gly90) protein carried no tag and was expressed in E.coli.
Species	Human
Source	E.coli
ProteinLength	Met1-Gly90
Description	<p>S100 calcium binding protein A6 (S100-A6) is also known as 2A9, 5B10, CABP, CACY and PRA, is a member of the S100 family of proteins containing 2 EF-hand calcium-binding motifs. S100 proteins are localized in the cytoplasm and/or nucleus of a wide range of cells, and involved in the regulation of a number of cellular processes such as cell cycle progression and differentiation. S100 genes include at least 13 members which are located as a cluster on chromosome 1q21. Most S100 proteins are disulfide-linked homodimer, and is normally present in cells derived from the neural crest, chondrocytes, macrophages, dendritic cells, etc. S100A6 may function in stimulation of Ca²⁺ -dependent insulin release, stimulation of prolactin secretion, and exocytosis. Chromosomal rearrangements and altered expression of this gene have been implicated in melanoma. S100A6 has been shown to interact with S100B and SUGT1.</p>
Predicted N Terminal	Met1
Form	Lyophilized from 0.22

 Tel: 1-631-559-9269 1-516-512-3133

 Email: info@creative-biomart.com  Fax: 1-631-938-8127

 45-1 Ramsey Road, Shirley, NY 11967, USA

	µm filtered solution in PBS, pH7.4, 10% trehalose.
Molecular Mass	The protein has a calculated MW of 10.2 kDa. The protein migrates as 10.2 kDa under reducing (R) condition (SDS-PAGE).
Endotoxin	Less than 1.0 EU per µg by the LAL method.
Purity	>95% as determined by SDS-PAGE.
Storage	<p>For long term storage, the product should be stored at lyophilized state at -20 centigrade or lower.</p> <p>Please avoid repeated freeze-thaw cycles.</p> <p>This product is stable after storage at:</p> <p>-20 to -70 centigrade for 12 months in lyophilized state;</p> <p>-70 centigrade for 3 months under sterile conditions after reconstitution.</p>
Reconstitution	It is recommended that sterile water be added to the vial to prepare a stock solution of 0.2 ug/ul. Centrifuge the vial at 4°C before opening to recover the entire contents.

GENE INFORMATION

Gene Name	S100A6
Official Symbol	S100A6
Synonyms	S100A6; S100 calcium binding protein A6; CACY, S100 calcium binding protein A6 (calcyclin) , S100 calcium binding protein A6 (calcyclin); protein S100-A6; 2A9; CABP; PRA; MLN 4; calcyclin; growth factor-inducible protein 2A9; prolactin receptor-associated protein; S100 calcium-binding protein A6 (calcyclin); 5B10; CACY
Gene ID	6277

 Tel: 1-631-559-9269 1-516-512-3133

 Email: info@creative-biomart.com  Fax: 1-631-938-8127

 45-1 Ramsey Road, Shirley, NY 11967, USA

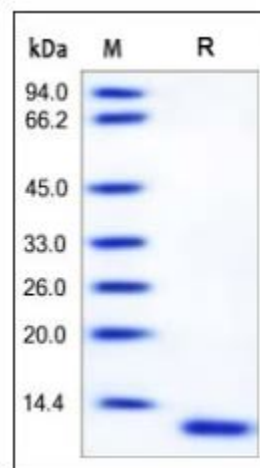
mRNA Refseq [NM_014624](#)

Protein Refseq [NP_055439](#)


MIM [114110](#)

UniProt ID [P06703](#)


**SDS-PAGE of
S100A6-3101H**



Human S100A6, Tag Free on SDS-PAGE under reducing (R) condition. The gel was stained overnight with Coomassie Blue. The purity of the protein is greater than 95%.

 Tel: 1-631-559-9269 1-516-512-3133

 Email: info@creative-biomart.com  Fax: 1-631-938-8127

 45-1 Ramsey Road, Shirley, NY 11967, USA