

# Recombinant Human S100P protein

**Cat. No.** S100P-3983H    **Lot. No.** (See product label)

## SPECIFICATION

<b>Product Overview</b>	Recombinant Human S100P (Met1-Lys95) protein carried no tag and and was expressed in E.coli.
<b>Species</b>	Human
<b>Source</b>	E.coli
<b>ProteinLength</b>	Met1-Lys95
<b>Description</b>	<p>S100 calcium-binding protein P (S100P),a member of the S-100 family, is also known as protein S100-P, migration-inducing gene 9 protein (MIG9) and protein S100-E,which contains two EF-hand domains. As for subunit structure,S100P is homodimer and heterodimer with S100A1. S100P may function as calcium sensor and contribute to cellular calcium signaling. In a calcium-dependent manner, S100P functions by interacting with other proteins, such as EZR and PPP5C, and indirectly plays a role in physiological processes like the formation of microvilli in epithelial cells.</p> <p>Furthermore,S100P may stimulate cell proliferation in an autocrine manner via activation of the receptor for activated glycation end products (RAGE).</p>
<b>Predicted N Terminal</b>	Met1
<b>Form</b>	Lyophilized from 0.22 µm filtered solution in 50 mM Tris, 150 mM NaCl, pH 8.0, 10% trehalose.
<b>Molecular Mass</b>	The protein has a calculated MW of 10.4 kDa. The protein migrates as 10.4 kDa

 Tel: 1-631-559-9269    1-516-512-3133

 Email: [info@creative-biomart.com](mailto:info@creative-biomart.com)     Fax: 1-631-938-8127

 45-1 Ramsey Road, Shirley, NY 11967, USA

	under reducing (R) condition (SDS-PAGE).
<b>Endotoxin</b>	Less than 1.0 EU per µg by the LAL method.
<b>Purity</b>	>95% as determined by SDS-PAGE.
<b>Storage</b>	<p>For long term storage, the product should be stored at lyophilized state at -20 centigrade or lower.</p> <p>Please avoid repeated freeze-thaw cycles.</p> <p>This product is stable after storage at:</p> <p>-20 to -70 centigrade for 12 months in lyophilized state;</p> <p>-70 centigrade for 3 months under sterile conditions after reconstitution.</p>
<b>Reconstitution</b>	It is recommended that sterile water be added to the vial to prepare a stock solution of 0.2 ug/ul. Centrifuge the vial at 4°C before opening to recover the entire contents.

## GENE INFORMATION

<b>Gene Name</b>	S100P
<b>Official Symbol</b>	S100P
<b>Synonyms</b>	S100P; S100 calcium binding protein P; protein S100-P; protein S100-E; migration-inducing gene 9; S100 calcium-binding protein P; MIG9
<b>Gene ID</b>	6286
<b>mRNA Refseq</b>	NM_005980
<b>Protein Refseq</b>	NP_005971

 Tel: 1-631-559-9269 1-516-512-3133

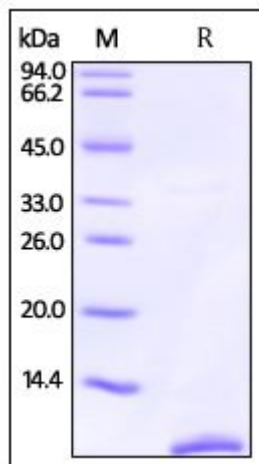
 Email: [info@creative-biomart.com](mailto:info@creative-biomart.com)  Fax: 1-631-938-8127

 45-1 Ramsey Road, Shirley, NY 11967, USA


**MIM** 600614

**UniProt ID** P25815


**SDS-PAGE of S100P-3983H**



Human S100P, Tag Free on SDS-PAGE under reducing (R) condition. The gel was stained overnight with Coomassie Blue. The purity of the protein is greater than 95%.

 Tel: 1-631-559-9269 1-516-512-3133

 Email: [info@creative-biomart.com](mailto:info@creative-biomart.com)  Fax: 1-631-938-8127

 45-1 Ramsey Road, Shirley, NY 11967, USA