

## Recombinant COVID-19 Spike protein S2 Protein (Ser686-Pro1213), His-tagged, Biotinylated

**Cat. No.** Spike-238VB    **Lot. No.** (See product label)

### SPECIFICATION

#### Product Overview

Recombinant COVID-19 NSP8 protein (Ser686-Pro1213) was fused to his-tag at the C-terminus and expressed in human 293 cells (HEK293). The purified recombinant protein was labeled with Biotin using the standard procedure.

#### Species

Sars-CoV-2

#### Source


HEK293

#### ProteinLength

Ser686-Pro1213

#### Description

Severe acute respiratory syndrome coronavirus 2 (SARS-CoV-2) is an enveloped, positive-sense, single-stranded RNA virus that causes coronavirus disease 2019 (COVID-19). Virus particles include the RNA genetic material and structural proteins needed for invasion of host cells. Once inside the cell the infecting RNA is used to encode structural proteins that make up virus particles, nonstructural proteins that direct virus assembly, transcription, replication and host control and accessory proteins whose function has not been determined.~ The structural proteins of SARS-CoV-2 include the envelope protein (E), spike or surface glycoprotein (S), membrane protein (M) and the nucleocapsid protein (N). The spike glycoprotein is found on the outside of the virus particle and gives coronavirus viruses their crown-like appearance. This glycoprotein mediates attachment of the virus particle and entry into the host cell. S protein is an important target for vaccine development, antibody therapies and diagnostic antigen-based tests.

 Tel: 1-631-559-9269    1-516-512-3133

 Email: [info@creative-biomart.com](mailto:info@creative-biomart.com)     Fax: 1-631-938-8127

 45-1 Ramsey Road, Shirley, NY 11967, USA


<b>Molecular Mass</b>	The protein has a calculated MW of 60.0 kDa. The protein migrates as 80-100 kDa under reducing (R) condition (SDS-PAGE) due to glycosylation.
<b>Endotoxin</b>	< 1.0 EU/μg by the LAL method.
<b>Purity</b>	> 95 % as determined by SDS-PAGE.
<b>Storage</b>	For long term storage, the product should be stored at -20 centigrade or lower. Please avoid repeated freeze-thaw cycles.
<b>Concentration</b>	1 mg/mL
<b>Storage Buffer</b>	PBS buffer
<b>Conjugation</b>	Biotin

## GENE INFORMATION

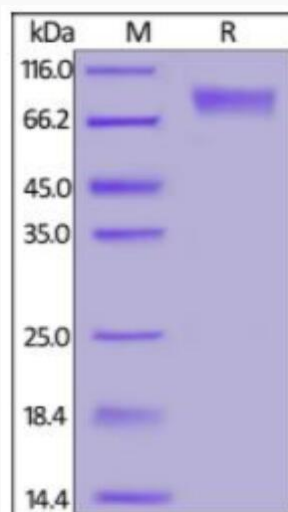
<b>Gene Name</b>	S surface glycoprotein [ Severe acute respiratory syndrome coronavirus 2 ]
<b>Official Symbol</b>	S
<b>Synonyms</b>	S; surface glycoprotein; spike glycoprotein; structural protein; spike protein
<b>Gene ID</b>	43740568
<b>Protein Refseq</b>	YP_009724390
<b>UniProt ID</b>	P0DTC2

 Tel: 1-631-559-9269 1-516-512-3133

 Email: [info@creative-biomart.com](mailto:info@creative-biomart.com)  Fax: 1-631-938-8127

 45-1 Ramsey Road, Shirley, NY 11967, USA

## SDS-PAGE



COVID-19 S2 protein, His Tag on SDS-PAGE under reducing (R) condition. The gel was stained overnight with Coomassie Blue. The purity of the protein is greater than 95 %.