

Active Recombinant Human TNFRSF17(Met 1- Ala 54), Fc/His tagged

Cat. No. TNFRSF17-2348H **Lot. No.** (See product label)

SPECIFICATION

Product Overview	Recombinant Human TNFRSF17(Met 1- Ala 54)(NP_001183.2) was expressed in HEK293, fused with a polyhistidine-tagged Fc region of human IgG1 at the C-terminus and a signal peptide at the N-terminus.
Species	Human
Source	HEK293
ProteinLength	Met 1- Ala 54
Form	Liquid in sterile PBS, pH7.4.
Bio-activity	Measured by its binding ability in a functional ELISA. Immobilized recombinant human BAFF at 1 µg/ml (100 µl/well) can bind human TNFRSF17. The EC50 of human TNFRSF17 is 0.0059 µg/ml.
Molecular Mass	The recombinant human TNFRSF17/Fc is a disulfide-linked homodimer. The reduced monomer comprises 302 amino acids after removal of the signal peptide and has a predicted molecular mass of 34 kDa.
Endotoxin	<1EU/ug by LAL method.
Purity	Greater than 95% as determined by reducing SDS-PAGE.

 Tel: 1-631-559-9269 1-516-512-3133

 Email: info@creative-biomart.com  Fax: 1-631-938-8127

 45-1 Ramsey Road, Shirley, NY 11967, USA

Storage

Store it under sterile conditions at -20°C ~-70°C. It is recommended that the protein be aliquoted for optimal storage. Avoid repeated freeze-thaw cycles.

Reconstitution

It is recommended that sterile water be added to the vial to prepare a stock solution of 0.2 ug/ul. Centrifuge the vial at 4°C before opening to recover the entire contents.

GENE INFORMATION
Gene Name

TNFRSF17 TNF receptor superfamily member 17 [Homo sapiens (human)]

Official Symbol

TNFRSF17

Synonyms

BCM; BCMA; CD269; TNFRSF13A; B cell maturation antigen; B-cell maturation factor; B-cell maturation protein

Gene ID

608

mRNA Refseq

NM_001192

Protein Refseq


NP_001183

UniProt ID

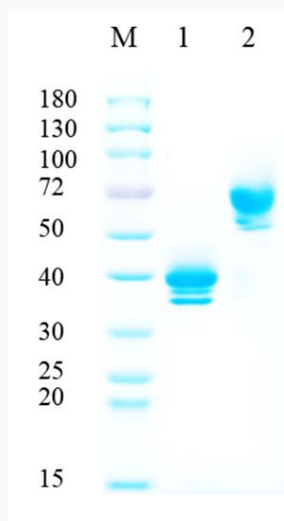
Q02223

 Tel: 1-631-559-9269 1-516-512-3133

 Email: info@creative-biomart.com  Fax: 1-631-938-8127

 45-1 Ramsey Road, Shirley, NY 11967, USA

SDS-PAGE



Tel: 1-631-559-9269 1-516-512-3133

Email: info@creative-biomart.com Fax: 1-631-938-8127

45-1 Ramsey Road, Shirley, NY 11967, USA