

Recombinant Human TNFRSF17 protein, His-Avi-tagged, Biotinylated

Cat. No. TNFRSF17-240H **Lot. No.** (See product label)

SPECIFICATION

Product Overview	Biotinylated Recombinant Human TNFRSF17 protein(Q02223-1)(Met1-Ala54), fused with C-terminal His and Avi tag, was expressed in HEK293.
Species	Human
Source	HEK293
ProteinLength	Met1-Ala54
Tag	C-His-Avi
Conjugation/Label	Biotin
Form	Lyophilized from 0.22µm filtered solution in PBS (pH 7.4). Normally 5% trehalose is added as protectant before lyophilization.
Bio-activity	Immobilized Anti-BCMA Antibody, hFc Tag at 0.2ug/ml (100ul/Well) on the plate. Dose response curve for Biotinylated Human BCMA, His Tag with the EC50 of 3.4ng/ml determined by ELISA.
Molecular Mass	The protein has a predicted MW of 8.9 kDa. Due to glycosylation, the protein migrates to 12 kDa and 15-17 kDa based on Tris-Bis PAGE result.
Endotoxin	Less than 1EU per µg by the LAL method.

 Tel: 1-631-559-9269 1-516-512-3133

 Email: info@creative-biomart.com  Fax: 1-631-938-8127

 45-1 Ramsey Road, Shirley, NY 11967, USA

Purity	> 95% as determined by Tris-Bis PAGE;> 95% as determined by HPLC
Storage	Reconstituted protein stable at -80°C for 12 months, 4°C for 1 week. Use a manual defrost freezer and avoid repeated freeze-thaw cycles.
Reconstitution	Centrifuge tubes before opening. Reconstituting to a concentration more than 100 µg/ml is recommended. Dissolve the lyophilized protein in distilled water.
Conjugation	Biotin

GENE INFORMATION

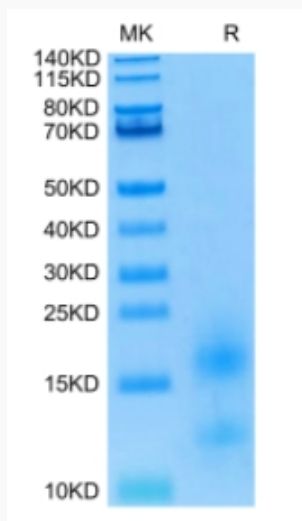
Gene Name	TNFRSF17 tumor necrosis factor receptor superfamily, member 17 [Homo sapiens]
Official Symbol	TNFRSF17
Synonyms	TNFRSF17; tumor necrosis factor receptor superfamily, member 17; BCMA; tumor necrosis factor receptor superfamily member 17; BCM; CD269; B-cell maturation factor; B cell maturation antigen; B-cell maturation protein;
Gene ID	608
mRNA Refseq	NM_001192
Protein Refseq	NP_001183
MIM	109545
UniProt ID	Q02223

 Tel: 1-631-559-9269 1-516-512-3133

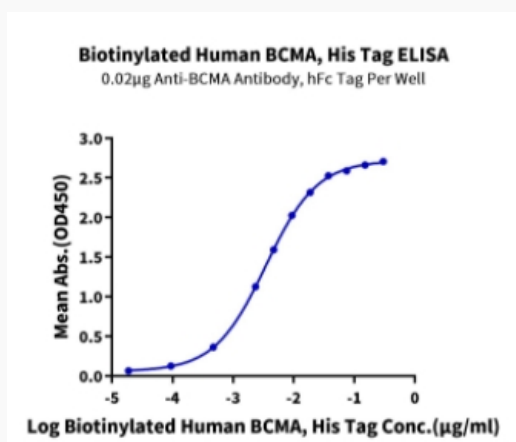
 Email: info@creative-biomart.com  Fax: 1-631-938-8127

 45-1 Ramsey Road, Shirley, NY 11967, USA

Tris-Bis PAGE



ELISA Data



Tel: 1-631-559-9269 1-516-512-3133

Email: info@creative-biomart.com Fax: 1-631-938-8127

45-1 Ramsey Road, Shirley, NY 11967, USA