

Recombinant Human VLDLR protein, His-tagged

Cat. No. VLDLR-892H **Lot. No.** (See product label)

SPECIFICATION

Product Overview	Recombinant Human VLDLR protein(P98155-1)(Gly28-Ser797), fused with C-terminal His tag, was expressed in HEK293.
Species	Human
Source	HEK293
ProteinLength	Gly28-Ser797
Tag	C-His
Form	Supplied as 0.22µm filtered solution in PBS (pH 7.4).
Bio-activity	Human VLDLR, His Tag immobilized on CM5 Chip can bind Human PCSK9, His Tag with an affinity constant of 0.72 nM as determined in SPR assay (Biacore T200).
Molecular Mass	The protein has a predicted MW of 85.9 kDa. Due to glycosylation, the protein migrates to 115-125 kDa based on Tris-Bis PAGE result.
Endotoxin	Less than 1EU per µg by the LAL method.
Purity	> 95% as determined by Tris-Bis PAGE;> 95% as determined by HPLC
Storage	Valid for 12 months from date of receipt when stored at -80°C. Recommend to aliquot the protein into smaller quantities for optimal storage. Please do not repeated freeze-

 Tel: 1-631-559-9269 1-516-512-3133

 Email: info@creative-biomart.com  Fax: 1-631-938-8127

 45-1 Ramsey Road, Shirley, NY 11967, USA

thaw cycles.

Reconstitution

It is recommended that sterile water be added to the vial to prepare a stock solution of 0.2 ug/ul. Centrifuge the vial at 4°C before opening to recover the entire contents.

GENE INFORMATION

Gene Name VLDLR very low density lipoprotein receptor [Homo sapiens]

Official Symbol VLDLR

Synonyms VLDLR; very low density lipoprotein receptor; very low-density lipoprotein receptor; VLDL-R; VLDL receptor; CARMQ1; CHRMQ1; VLDLRCH; FLJ35024;

Gene ID 7436

mRNA Refseq NM_001018056


Protein Refseq NP_001018066

MIM 192977

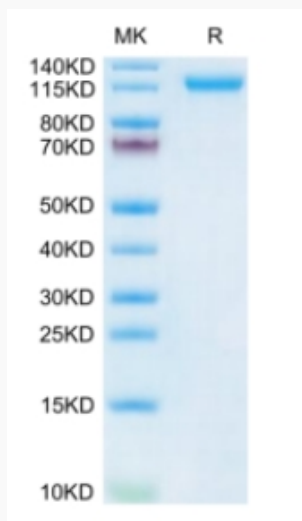
UniProt ID P98155

 Tel: 1-631-559-9269 1-516-512-3133

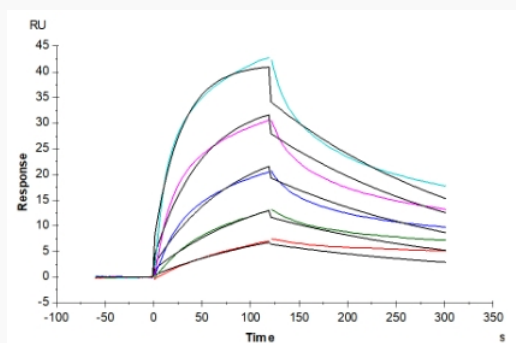
 Email: info@creative-biomart.com  Fax: 1-631-938-8127

 45-1 Ramsey Road, Shirley, NY 11967, USA

Tris-Bis PAGE



SPR Data



Tel: 1-631-559-9269 1-516-512-3133

Email: info@creative-biomart.com Fax: 1-631-938-8127

45-1 Ramsey Road, Shirley, NY 11967, USA