

Mouse Anti Sheep CD8 Monoclonal Antibody, FITC

DMABT-45291MS Mouse(CD8)

Lot. No. (See product label)

PRODUCT INFORMATION

Product Overview	Mouse Anti Sheep CD8,FITC
Immunogen	Ovine efferent lymphocytes
Host	Mouse
Isotype	IgG2a
Species	Sheep
Cross Reactivity	Bovine and caprine N.B. Antibody reactivity and working conditions may vary between species.
Clone	49.76
Conjugation	FITC
Applications	FCM,
Dilution	FCM: Neat - 1/10

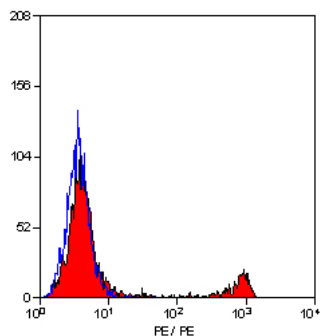
PACKAGING

Format	Purified IgG conjugated to Fluorescein Isothiocyanate Isomer 1 (FITC) - liquid
Protein Concentration	IgG concentration 0.1 mg/ml
Buffer	Phosphate buffered saline
Storage	Store at +4 °C or at -20 °C if preferred. This product should be stored undiluted. Storage in frost-free freezers is not recommended. This product is photosensitive and should be protected from light. Avoid repeated freezing and thawing as this may denature the antibody. Should this product contain a precipitate we recommend microcentrifugation before use.
Preservative	0.09% Sodium Azide 1% Bovine Serum Albumin
Shelf Life	18 months from date of despatch.

BACKGROUND

Introduction	CD8 is a 68 kDa disulphide-linked, transmembrane glycoprotein. The CD8 molecule serves as a receptor for MHC class I molecules and can mediate a function as a coreceptor in TCR-ligand binding and T-cell activation. Its cytoplasmic part is associated with the p56lck tyrosine kinase. CD8 is expressed by the great majority of cortical thymocytes and approximately 30% of medullary thymocytes, and by class I major histocompatibility complex restricted, mature suppressor/cytotoxic T cells. In addition a proportion of $\gamma\delta$ T cells and NK cells express CD8. Thus, CD8 is expressed by about 25-35% of peripheral T cells, and about 30% of NK cells express low levels of CD8. Immunophenotyping of lymphocytes is widely applied as a component of the testing of peripheral blood for diagnosis of immunodeficiencies such as acquired immunodeficiency syndrome (AIDS). An increase in the percentage of CD8-positive T cells has been reported during cytomegalovirus infection.
Keywords	CD 8; CD 8A; CD 8B; CD8 antigen alpha polypeptide; CD8A; CD8a antigen; CD8a molecule; CD8B; CD8b antigen; CD8b antigen isoform 2; CD8b molecule; CD8B protein; CD8B1; Leu2; Leu2 T lymphocyte antigen; Ly3; LYT3; MAL; MGC119115; OKT8 T Cell antigen; p32; T cell antigen Leu2; T cell surface glycoprotein CD8 alpha chain; T cell surface glycoprotein CD8 beta chain; T lymphocyte differentiation antigen T8/Leu 2

IMAGES



Staining of sheep peripheral blood lymphocytes with Mouse anti Ovine CD8:FITC