

## Sheep Anti Mushroom TYrosinase Polyclonal Antibody

DPBT-68200SM Sheep(TYR)

Lot. No. (See product label)

### PRODUCT INFORMATION

<b>Product Overview</b>	Sheep Anti Mushroom Tyrosinase
<b>Immunogen</b>	Highly pure tyrosinase from mushrooms.
<b>Host</b>	Sheep
<b>Isotype</b>	Polyclonal IgG
<b>Species</b>	Fungal
<b>Conjugation</b>	N/A
<b>Applications</b>	IHC, ELISA, WB

### PACKAGING

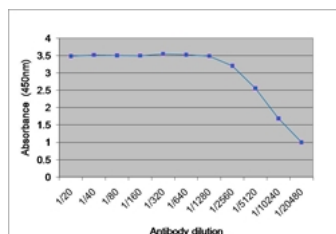
<b>Format</b>	Serum - liquid
<b>Storage</b>	Store at +4 centigrade or at -20 centigrade if preferred. Storage in frost-free freezers is not recommended. This product should be stored undiluted. Avoid repeated freezing and thawing as this may denature the antibody. Should this product contain a precipitate we recommend microcentrifugation before use.
<b>Preservative</b>	0.09% Sodium Azide (NaN <sub>3</sub> )
<b>Shelf Life</b>	18 months from date of despatch.

### BACKGROUND

**Introduction** The enzyme encoded by this gene catalyzes the first 2 steps, and at least 1 subsequent step, in the conversion of tyrosine to melanin. The enzyme has both tyrosine hydroxylase and dopa oxidase catalytic activities, and requires copper for function. Mutations in this gene result in oculocutaneous albinism, and nonpathologic polymorphisms result in skin pigmentation variation. The human genome contains a pseudogene similar to the 3' half of this gene.

**Keywords** Tyrosinase; Tyrosinase precursor; tyrosinase (oculocutaneous albinism IA); Monophenol monooxygenase; Tumor rejection antigen AB; LB24-AB; SK29-AB; EC 1.14.18.1; CMM8; SHEP3; OCA1A; OCAIA; OTTHUMP00000235653

### IMAGES



Mushroom tyrosinase detected with Sheep anti Mushroom Tyrosinase