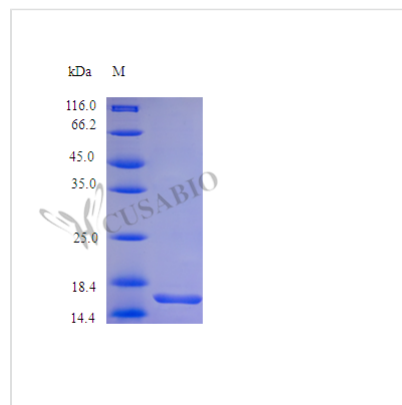




# Recombinant Human Leptin protein(LEP) (Active)

<b>Product Code</b>	CSB-AP000061HU
<b>Uniprot No.</b>	P41159
<b>Storage Buffer</b>	0.2 μm filtered PBS, pH 7.4 ,lyophilized
<b>Product Type</b>	Hormone
<b>Species</b>	Homo sapiens (Human)
<b>Biological Activity</b>	Fully biologically active when compared to standard. The ED50 as determined by a chemotaxis bioassay using human Leptin R transfected BaF3 murine proB cells is less than 2 ng/ml, corresponding to a specific activity of >5.0x10 <sup>5</sup> IU/mg.
<b>Purity</b>	>97% as determined by SDS-PAGE and HPLC.
<b>Sequence</b>	VPIQKVQDDT KTLIKTIVTR INDISHTQSV SSKQKVTGLD FIPGLHPILT LSKMDQTLAV YQQILTSMPs RNVIQISNDL ENLRDLLHVL AFSKSchLPW ASGLETLDSL GGVLEASGYS TEVVALSRLQ GSLQDMLWQL DLSPGC
<b>Lead Time</b>	5-10 business days
<b>Research Area</b>	Signal Transduction
<b>Source</b>	E.coli
<b>Gene Names</b>	LEP
<b>Expression Region</b>	22-167aa
<b>Tag Info</b>	Tag-Free
<b>Mol. Weight</b>	16.0 kDa
<b>Protein Description</b>	Full Length of Mature Protein
<b>PubMed ID</b>	7984236; 7789654; 8626726; 7499240; 8621021; 15489334; 10428856; 9166907; 9144295; 9500540

## Image



## Typical

Less than 1.0 EU/μg as determined by LAL method.