



Recombinant Human Major vault protein(MVP)

Product Code	CSB-EP015248HU
Relevance	Required for normal vault structure. Vaults are multi-subunit structures that may act as scaffolds for proteins involved in signal transduction. Vaults may also play a role in nucleo-Cytoplasmic domain transport. Down-regulates INFG-mediated STAT1 signaling and subsequent activation of JAK. Down-regulates SRC activity and signaling through MAP kinases.
Storage	The shelf life is related to many factors, storage state, buffer ingredients, storage temperature and the stability of the protein itself. Generally, the shelf life of liquid form is 6 months at -20°C/-80°C. The shelf life of lyophilized form is 12 months at -20°C/-80°C.
Uniprot No.	Q14764
Storage Buffer	Tris-based buffer,50% glycerol
Alias	Lung resistance-related protein
Product Type	Recombinant Protein
Species	Homo sapiens (Human)
Purity	Greater than 90% as determined by SDS-PAGE.
Sequence	ATEEFIIRIPPYHYIHVLDQNSNVSERVEVGPKTYIRQDNERNVLFAPMRMVTVPP RHYCTVANPVS RDAQGLV LFDVTGQVRLRHADLEIRLAQDPFPLYPGEVLEKD ITPLQVVLPNTALHLKALLDFEDKDGDKVVAGDEWLFEGPGTYIPRKEVEVEII QATIIRQNQALRLRARKECWDRDGERVTGEEWLVTTVGAYLPAVFEEVLDLV DAVILTEKTALHLRARRNFRDFRGVSRRTGEEWLVTVQDTEAHVPDVHEEVLG VVPITTLGPHNYCVILDPVGPDKGNQLGQKRVVKGEKSFFLQPGEQLEQGIQD VYVLSEQQGLLLRALQPLEEGEDEEKVSHQAGDHWLIRGPLEYVPSAKVEVE ERQAIPLDENEGIYVQDVKTGKVRVIGSTYMLTQDEVLWEKELPPGVEELLN KGQDPLADRGEKDTAKSLQPLAPRNKTRVVSYPHNAAVQVYDYREKRARV VFGPELVSLGPEEQFTVLSLSAGRPKRPHARRALCLLLGPDFFTDVITETADH ARLQLQLAYNWHFEVNDRKDPQETAKLFSVPDFVGDACKAIASRVRGAVASV TFDDFHKNSARIIRTA VFGFETSEAKGPDGMALPRPRDQAVFPQNGLVVSSVD VQSVEPVDQRTRDALQRSVQLAIEITNSQEA AAKHEAQRLEQEARGRLERQK ILDQSEAEKARKELELEALSMAVESTGTAKAEAESRAEAARIEGEGSVLQAKL KAQALAIETEAE LQRVQKVRELELVYARAQLELEVSKAQQLAEEVEVKKFKQMT EAIGPSTIRDLAVAGPEMQV KLLQSLGLKSTLITDGSTPINLFNTAFGLLGMPGE GQPLGRRVASGSPGEGISPQSAQAPQAPGDNHVVPVLR
Research Area	Transport
Source	E.coli
Gene Names	MVP
Expression Region	2-893aa
Notes	Repeated freezing and thawing is not recommended. Store working aliquots at 4°C for up to one week.

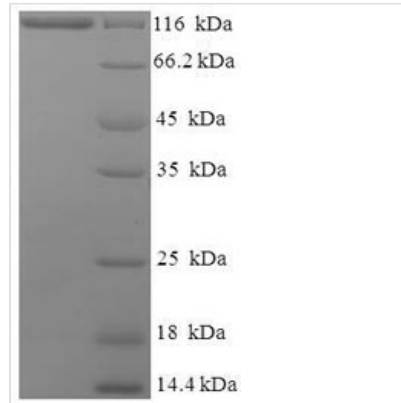


Tag Info N-terminal 6xHis-SUMO-tagged

Mol. Weight 115.2kDa

Protein Description Full Length of Mature Protein

Image



(Tris-Glycine gel) Discontinuous SDS-PAGE (reduced) with 5% enrichment gel and 15% separation gel.