

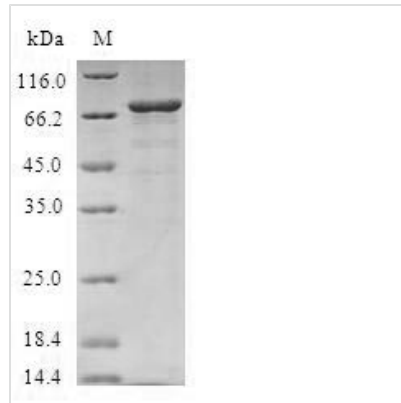


Recombinant Human Protein phosphatase 1A(PPM1A)

Product Code	CSB-EP018489HU
Relevance	Enzyme with a broad specificity. Negatively regulates TGF-beta signaling through dephosphorylating SMAD2 and SMAD3, resulting in their dissociation from SMAD4, nuclear export of the SMADs and termination of the TGF-beta-mediated signaling. Dephosphorylates PRKAA1 and PRKAA2. Plays an important role in the termination of TNF-alpha-mediated NF-kappa-B activation through dephosphorylating and inactivating IKBKB/IKKB.
Storage	The shelf life is related to many factors, storage state, buffer ingredients, storage temperature and the stability of the protein itself. Generally, the shelf life of liquid form is 6 months at -20°C/-80°C. The shelf life of lyophilized form is 12 months at -20°C/-80°C.
Uniprot No.	P35813
Storage Buffer	Tris-based buffer,50% glycerol
Alias	Protein phosphatase 2C isoform alpha
Product Type	Recombinant Protein
Species	Homo sapiens (Human)
Purity	Greater than 90% as determined by SDS-PAGE.
Sequence	GAFLDKPKMEKHNAQQGQGNGLRYGLSSMQGWVEMEDAHTAVIGLPSGLES WSFFAVYDGHAGSQVAKYCCEHLLDHITNNQDFKGSAGAPSVENVKNGIRTG FLEIDEHMRVMSEKKHGADRSGSTAVGVLISPQHTYFINGDGRLLCRNRKV HFFTQDHPKPSNPLEKERIQNAGGSVMIQRVNGSLAVSRALGDFDYKCVHGKG PTEQLVSPEPEVHDIERSEEDDQFIILACDGIWDVMGNEELCDFVRSRLEVTDD LEKVCNEVVDTCLYKGSRDNMSVILICFPNAPKVSPEAVKKEAELDKYLECRVE EIIKKQGEGVPLVHVMRTLASENIPSLPPGGELASKRNVIEAVYNRLNPNYKND DTDSTSTDDMW
Research Area	Signal Transduction
Source	E.coli
Gene Names	PPM1A
Protein Names	Recommended name: Protein phosphatase 1A EC= 3.1.3.16 Alternative name(s): Protein phosphatase 2C isoform alpha Short name= PP2C-alpha Protein phosphatase IA
Expression Region	1-382aa
Notes	Repeated freezing and thawing is not recommended. Store working aliquots at 4°C for up to one week.
Tag Info	N-terminal GST-tagged
Mol. Weight	69.3kDa

**Protein Description**

Full Length

Image

(Tris-Glycine gel) Discontinuous SDS-PAGE (reduced) with 5% enrichment gel and 15% separation gel.