



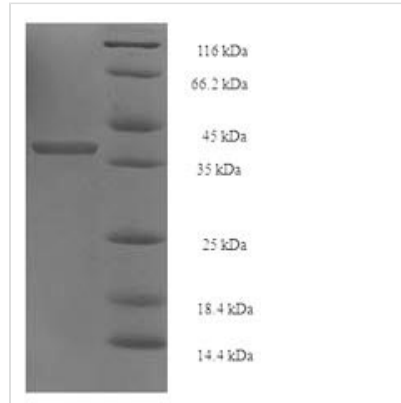
# Recombinant Human 26S proteasome non-ATPase regulatory subunit 10(PSMD10)

<b>Product Code</b>	CSB-EP018899HU
<b>Relevance</b>	Acts as a chaperone during the assembly of the 26S proteasome, specifically of the PA700/19S regulatory complex (RC). In the initial step of the base subcomplex assembly is part of an intermediate PSMD10:PSMC4:PSMC5:PAAF1 module which probably assembles with a PSMD5:PSMC2:PSMC1:PSMD2 module. Independently of the proteasome, regulates EGF-induced AKT activation through inhibition of the RHOA/ROCK/PTEN pathway, leading to prolonged AKT activation. Plays an important role in RAS-induced tumorigenesis. Acts as a proto-oncogene by being involved in negative regulation of tumor suppressors RB1 and p53/TP53. Overexpression is leading to phosphorylation of RB1 and proteasomal degradation of RB1. Regulates CDK4-mediated phosphorylation of RB1 by competing with CDKN2A for binding with CDK4. Facilitates binding of MDM2 to p53/TP53 and the mono- and polyubiquitination of p53/TP53 by MDM2 suggesting a function in targeting the TP53:MDM2 complex to the 26S proteasome. Involved in p53-independent apoptosis. Involved in regulation of NF-kappa-B by retaining it in the cytoplasm. Binds to the NF-kappa-B component RELA and accelerates its XPO1/CRM1-mediated nuclear export.
<b>Storage</b>	The shelf life is related to many factors, storage state, buffer ingredients, storage temperature and the stability of the protein itself. Generally, the shelf life of liquid form is 6 months at -20°C/-80°C. The shelf life of lyophilized form is 12 months at -20°C/-80°C.
<b>Uniprot No.</b>	O75832
<b>Storage Buffer</b>	Tris-based buffer, 50% glycerol
<b>Alias</b>	26S proteasome regulatory subunit p28Gankyrin p28(GANK)
<b>Product Type</b>	Recombinant Protein
<b>Species</b>	Homo sapiens (Human)
<b>Purity</b>	Greater than 90% as determined by SDS-PAGE.
<b>Sequence</b>	MEGCVSNLMVCNLAYSGKLEELKESILADKSLATRTDQDSRTALHWACSAGH TEIVEFLLQLGVPVNDKDDAGWSPLHIAASAGRDEIVKALLGKGAQVNAVQN GCTPLHYAASKNRHEIAVMLLEGGANPDAKDHYEATAMHRAAAKGNLKMIIHIL LYYKASTNIQDTEGNTPLHLACDEERVEEAKLLVSQGASIIYIENKEEKTPLQVA KGGLGLILKRMVEG
<b>Research Area</b>	Cancer
<b>Source</b>	E.coli
<b>Gene Names</b>	PSMD10
<b>Expression Region</b>	1-226aa
<b>Notes</b>	Repeated freezing and thawing is not recommended. Store working aliquots at



4°C for up to one week.

<b>Tag Info</b>	N-terminal 6xHis-SUMO-tagged
<b>Mol. Weight</b>	40.4kDa
<b>Protein Description</b>	Full Length

**Image**

(Tris-Glycine gel) Discontinuous SDS-PAGE (reduced) with 5% enrichment gel and 15% separation gel.