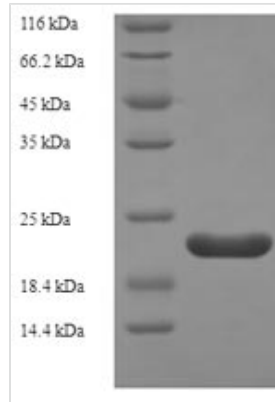




# Recombinant Rat Regenerating islet-derived protein 3-alpha(Reg3a)

<b>Product Code</b>	CSB-EP019548RA
<b>Relevance</b>	Bactericidal C-type lectin. Regulates keratinocyte proliferation and differentiation after skin injury via activation of EXTL3-PI3K-AKT signaling pathway .
<b>Storage</b>	The shelf life is related to many factors, storage state, buffer ingredients, storage temperature and the stability of the protein itself. Generally, the shelf life of liquid form is 6 months at -20°C/-80°C. The shelf life of lyophilized form is 12 months at -20°C/-80°C.
<b>Uniprot No.</b>	P35231
<b>Storage Buffer</b>	Tris-based buffer,50% glycerol
<b>Alias</b>	Islet of Langerhans regenerating protein 3 ;REG 3Lithostathine 3;Pancreatitis-associated protein 2RegIIIRegenerating islet-derived protein III-alpha ;Reg III-alpha
<b>Product Type</b>	Recombinant Protein
<b>Species</b>	Rattus norvegicus (Rat)
<b>Purity</b>	Greater than 90% as determined by SDS-PAGE.
<b>Sequence</b>	EDSQKAVPSTRTSCPMGSKAYRSYCYTLVTTLKSWFQADLACQKRPSGHLVS ILSGGEASFVSSLVTGRVNNNQDIWIWLHDPTMGQQPNGGGWEWSNSDVLN YLNWDGDPSSVTNRGNCGLTATSEFLKWGDHHCDELFPVCKFKQ
<b>Lead Time</b>	3-7 business days
<b>Research Area</b>	Others
<b>Source</b>	E.coli
<b>Gene Names</b>	Reg3a
<b>Expression Region</b>	26-174aa
<b>Notes</b>	Repeated freezing and thawing is not recommended. Store working aliquots at 4°C for up to one week.
<b>Tag Info</b>	N-terminal 6xHis-tagged
<b>Mol. Weight</b>	20.5kDa
<b>Protein Description</b>	Full Length of Mature Protein

Image



(Tris-Glycine gel) Discontinuous SDS-PAGE (reduced) with 5% enrichment gel and 15% separation gel.