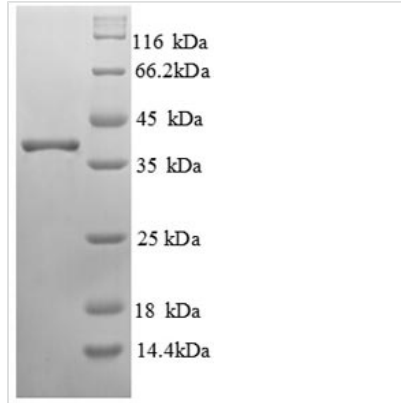


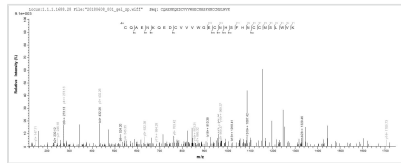


Recombinant Human RING-box protein 2(RNF7)

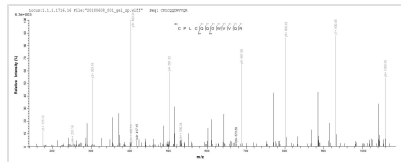
Product Code	CSB-EP019897HU
Relevance	Probable component of the SCF (SKP1-CUL1-F-box protein) E3 ubiquitin ligase complex which mediates the ubiquitination and subsequent proteasomal degradation of target proteins involved in cell cycle progression, signal transduction and transcription. Through the RING-type zinc finger, ses to recruit the E2 ubiquitination enzyme to the complex and brings it into close proximity to the substrate. Promotes the neddylation of CUL5 via its interaction with UBE2F. May play a role in protecting cells from apoptosis induced by redox agents.
Storage	The shelf life is related to many factors, storage state, buffer ingredients, storage temperature and the stability of the protein itself. Generally, the shelf life of liquid form is 6 months at -20°C/-80°C. The shelf life of lyophilized form is 12 months at -20°C/-80°C.
Uniprot No.	Q9UBF6
Storage Buffer	Tris-based buffer,50% glycerol
Alias	CKII beta-binding protein 1 ;CKBBP1RING finger protein 7Regulator of cullins 2Sensitive to apoptosis gene protein
Product Type	Recombinant Protein
Species	Homo sapiens (Human)
Purity	Greater than 90% as determined by SDS-PAGE.
Sequence	ADVEDGEETCALASHSGSSGSKSGGDKMFLKKNVAVAMWSWDVECDTCAI CRVQVMDACLRCQAENKQEDCVVWVGECNHSFHNCMSLWVKQNNRCPLC QQDWVVRIGK
Research Area	Epigenetics and Nuclear Signaling
Source	E.coli
Gene Names	RNF7
Expression Region	2-113aa
Notes	Repeated freezing and thawing is not recommended. Store working aliquots at 4°C for up to one week.
Tag Info	N-terminal GST-tagged
Mol. Weight	39.6kDa
Protein Description	Full Length of Mature Protein
Image	



(Tris-Glycine gel) Discontinuous SDS-PAGE (reduced) with 5% enrichment gel and 15% separation gel.



Based on the SEQUEST from database of E.coli host and target protein, the LC-MS/MS Analysis result of CSB-EP019897HU could indicate that this peptide derived from E.coli-expressed Homo sapiens (Human) RNF7.



Based on the SEQUEST from database of E.coli host and target protein, the LC-MS/MS Analysis result of CSB-EP019897HU could indicate that this peptide derived from E.coli-expressed Homo sapiens (Human) RNF7.