



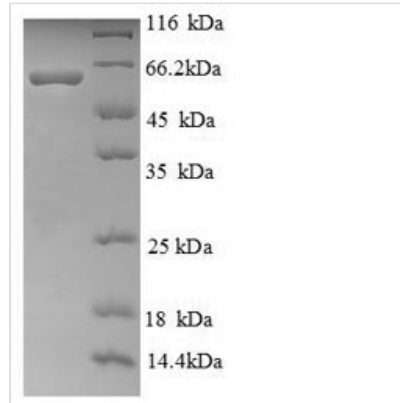
Recombinant Human Ryanodine receptor 1(RYR1),partial

Product Code	CSB-EP020619HU
Relevance	Calcium channel that mediates the release of Ca ²⁺ from the sarcoplasmic reticulum into the cytoplasm and thereby plays a key role in triggering muscle contraction following depolarization of T-tubules. Repeated very high-level exercise increases the open probability of the channel and leads to Ca ²⁺ leaking into the cytoplasm. Can also mediate the release of Ca ²⁺ from intracellular stores in neurons, and may thereby promote prolonged Ca ²⁺ signaling in the brain. Required for normal bryonic development of muscle fibers and skeletal muscle. Required for normal heart morphogenesis, skin development and ossification during bryogenesis .
Storage	The shelf life is related to many factors, storage state, buffer ingredients, storage temperature and the stability of the protein itself. Generally, the shelf life of liquid form is 6 months at -20°C/-80°C. The shelf life of lyophilized form is 12 months at -20°C/-80°C.
Uniprot No.	P21817
Storage Buffer	Tris-based buffer,50% glycerol
Alias	Skeletal muscle calcium release channelSkeletal muscle ryanodine receptorSkeletal muscle-type ryanodine receptorType 1 ryanodine receptor
Product Type	Recombinant Protein
Species	Homo sapiens (Human)
Purity	Greater than 90% as determined by SDS-PAGE.
Sequence	MGDAEGEDEVQFLRTDDEVVLQCSATVLKEQLKLCLAAEGFGNRLCFLEPTS NAQNVPPDLAICCFVLEQSLSVRALQEMLANTVEAGVLESSQGGGHRTLLYGH AILLRHAHSRMYLSCLTTSRSMTDKLAFDVGLQEDATGEACWWTMHPASKQR SEGEKVRVGGDDIILVSVSSERYLHLSTASGELQVDASFMQTLWNMNPICSRCE EGFVTGGHVLRLFHGHMDECLTISPADSDDQRRLLVYYEGGAVCTHARSLWRL EPLRISWSGSHLRWGQPLRVRHVTTGQYLALTEDQGLVVVDASKAHTKATSF CFRISKEKLDVAPKRDVEGMGPPEIKYGESLCFVQHVASGLWLTYAAPDPKAL RLGVLKKKAMLHQEGHMDDALSLTRCQQEESQAARMIHSTNGLYNQFIKSLD SFGKPRGSGPPAGTALPIEGVILSLQDLIIYFPPSEDLQHEEKQSKLRSRNR QSLFQEEGMLSMVLNCIDRLNVYTAAHFAEFAGEEAAESWKEIVNLLYELLAS LIRGNRS
Research Area	Transport
Source	E.coli
Gene Names	RYR1
Expression Region	1-534aa
Notes	Repeated freezing and thawing is not recommended. Store working aliquots at



4°C for up to one week.

Tag Info	N-terminal 6xHis-tagged
Mol. Weight	63.3kDa
Protein Description	Partial

Image

(Tris-Glycine gel) Discontinuous SDS-PAGE (reduced) with 5% enrichment gel and 15% separation gel.