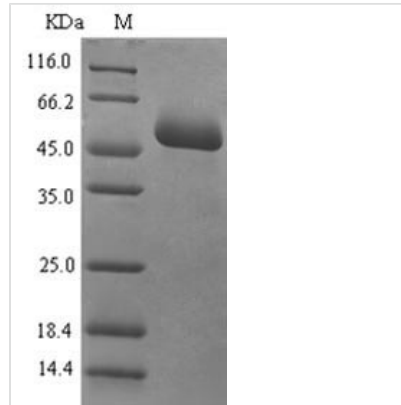




# Recombinant Human Mucosal addressin cell adhesion molecule 1(MADCAM1),partial

|                            |   |
|----------------------------|---|
| <b>Product Code</b>        | CSB-EP618776HU  |
| <b>Relevance</b>           | Cell adhesion leukocyte receptor expressed by mucosal venules, helps to direct lymphocyte traffic into mucosal tissues including the Peyer patches and the intestinal lamina propria. It can bind both integrin alpha-4/beta-7 and L-selectin, regulating both the passage and retention of leukocytes. Isoform 2, lacking the mucin-like domain, may be specialized in supporting integrin alpha-4/beta-7-dependent adhesion strengthening, independent of L-selectin binding. |
| <b>Storage</b>             | The shelf life is related to many factors, storage state, buffer ingredients, storage temperature and the stability of the protein itself. Generally, the shelf life of liquid form is 6 months at -20°C/-80°C. The shelf life of lyophilized form is 12 months at -20°C/-80°C.   |
| <b>Uniprot No.</b>         | Q13477  |
| <b>Storage Buffer</b>      | Tris-based buffer,50% glycerol  |
| <b>Alias</b>               | Short name: MAdCAM-1 Short name: hMAdCAM-1  |
| <b>Product Type</b>        | Recombinant Protein   |
| <b>Species</b>             | Homo sapiens (Human)  |
| <b>Purity</b>              | Greater than 90% as determined by SDS-PAGE.   |
| <b>Sequence</b>            | QSLQVKPLQVEPPEPVVAVALGASRQLTCRLACADRGASVQWRGLDTSLGAV<br>QSDTGRSVLTVRNASLSAAGTRVCVCGSCGGRTFQHTVQLLVYAFPDQLTVSP<br>AALVPGDPEVACTAHKVTPVDPNALSFSLLVGGQELEGAQALGPEVQEEEE<br>PQGDEDVLFVRVTERWRLPPLGTPVPPALYCQATMRLPGLELSHRQAIPVLHSP<br>TSPEPPDTTSPESPDTTSPESPDTTSQEPPDTTSPPEPDKTSPEPAPQQGSTH<br>TPRSPGSTRTRRPEISQAGPTQGEVIPTGSSKPADGQ  |
| <b>Research Area</b>       | Immunology  |
| <b>Source</b>              | E.coli  |
| <b>Gene Names</b>          | MADCAM1   |
| <b>Expression Region</b>   | 19-317aa  |
| <b>Notes</b>               | Repeated freezing and thawing is not recommended. Store working aliquots at 4°C for up to one week.   |
| <b>Tag Info</b>            | N-terminal 6xHis-SUMO-tagged  |
| <b>Mol. Weight</b>         | 47.4kDa   |
| <b>Protein Description</b> | Extracellular Domain  |
| <b>Image</b>               |   |



(Tris-Glycine gel) Discontinuous SDS-PAGE (reduced) with 5% enrichment gel and 15% separation gel.