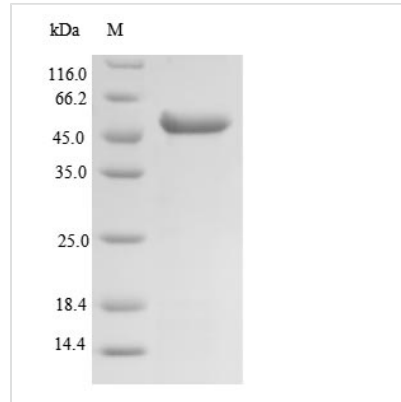




Recombinant Human Succinyl-CoA ligase [GDP-forming] subunit beta, mitochondrial(SUCLG2),partial

Product Code	CSB-EP846636HU
Relevance	Catalyzes the GTP-dependent ligation of succinate and CoA to form succinyl-CoA.
Storage	The shelf life is related to many factors, storage state, buffer ingredients, storage temperature and the stability of the protein itself. Generally, the shelf life of liquid form is 6 months at -20°C/-80°C. The shelf life of lyophilized form is 12 months at -20°C/-80°C.
Uniprot No.	Q96I99
Storage Buffer	Tris-based buffer,50% glycerol
Alias	GTP-specific succinyl-CoA synthetase subunit beta;Succinyl-CoA synthetase beta-G chain ;SCS-betaG
Product Type	Recombinant Protein
Species	Homo sapiens (Human)
Purity	Greater than 90% as determined by SDS-PAGE.
Sequence	MSDNGVRVQRFFVADTANEALEAAKRLNAKEIVLKAQILAGGRGKGVFNSGLK GGVHLTKDPNVVVGQLAKQMIGYNLTKQTPKEGVKVNKVMVAEALDISRETYL AILMDRSCNGPVLVGSPQGGVDIEEVAASNPELIFKEQIDIFEGIKDSQAQRMA ENLGFVGPLKSQAADQITKLYNLFLKIDATQVEVNPFGETPEGQVVCFDAKINF DDNAEFRQKDIFAMDDKSENEPIENEAAKYDLKYIGLDGNIACFVNGAGLAMAT CDIIFLNGGKPANFLDLGGGVKEAQVYQAFKLLTADPKVEAILVNIFGGIVNCAII ANGITKACRELELKVPLVVRLEGTNVQEAQKILNNSGLPITSAIDLEDAAK
Research Area	Metabolism
Source	E.coli
Gene Names	SUCLG2
Expression Region	49-423aa
Notes	Repeated freezing and thawing is not recommended. Store working aliquots at 4°C for up to one week.
Tag Info	N-terminal 6xHis-SUMO-tagged
Mol. Weight	56.3kDa
Protein Description	Partial
Image	



(Tris-Glycine gel) Discontinuous SDS-PAGE (reduced) with 5% enrichment gel and 15% separation gel.