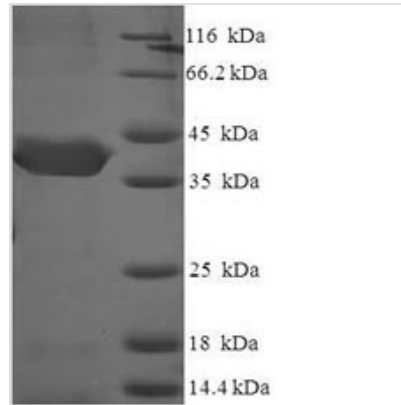




Recombinant Human CUE domain-containing protein 2(CUEDC2),partial

Product Code	CSB-EP884464HU
Relevance	Down-regulates ESR1 protein levels through the ubiquitination-proteasome pathway, regardless of the presence of 17 beta-estradiol. Also involved in 17 beta-estradiol-induced ESR1 degradation. Controls PGR protein levels through a similar mechanism.
Storage	The shelf life is related to many factors, storage state, buffer ingredients, storage temperature and the stability of the protein itself. Generally, the shelf life of liquid form is 6 months at -20°C/-80°C. The shelf life of lyophilized form is 12 months at -20°C/-80°C.
Uniprot No.	Q9H467
Storage Buffer	Tris-based buffer,50% glycerol
Product Type	Recombinant Protein
Species	Homo sapiens (Human)
Purity	Greater than 90% as determined by SDS-PAGE.
Sequence	MELERIVSAALLAFVQTHLPEADLSGLDEVIFSYVLGVLEDLGPSPGPSEENFDM EAFTEMMEAYVPGFAHIPRGTIGDMMQKLSGQLSDARNKENLQPQSSGVQG QVPISPEPLQRPEMLKEETRSSAAAAADTQDEATGAEELLPGVDVLLVFPT CSVEQAQWVLAKARGDLEEAVQMLVEGKEEGPAAWEGPNQDLPRRLRGPQ KDELKSFILQKYMMVDSA
Research Area	Epigenetics and Nuclear Signaling
Source	E.coli
Gene Names	CUEDC2
Expression Region	1-226aa
Notes	Repeated freezing and thawing is not recommended. Store working aliquots at 4°C for up to one week.
Tag Info	N-terminal 6xHis-SUMO-tagged
Mol. Weight	40.7kDa
Protein Description	Partial
Image	



(Tris-Glycine gel) Discontinuous SDS-PAGE (reduced) with 5% enrichment gel and 15% separation gel.