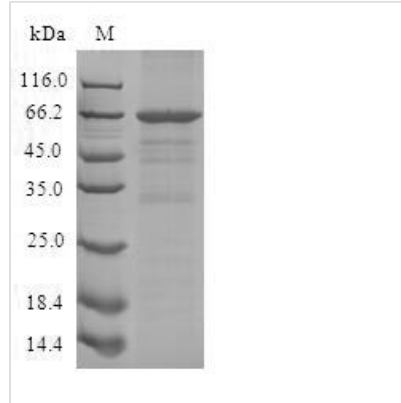


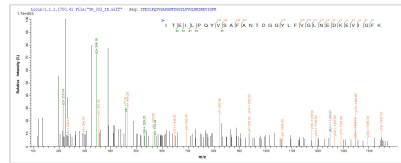


Recombinant Human Schlafen family member 12-like(SLFN12L)

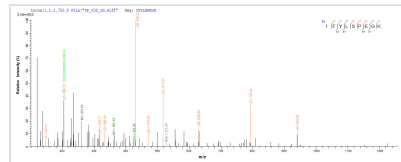
| | |
|----------------------------|---|
| Product Code | CSB-CF021762HU |
| Storage | The shelf life is related to many factors, storage state, buffer ingredients, storage temperature and the stability of the protein itself. Generally, the shelf life of liquid form is 6 months at -20°C/-80°C. The shelf life of lyophilized form is 12 months at -20°C/-80°C. |
| Uniprot No. | Q6IEE8 |
| Storage Buffer | Tris-based buffer?50% glycerol |
| Product Type | Transmembrane Protein |
| Species | Homo sapiens (Human) |
| Purity | Greater than 85% as determined by SDS-PAGE. |
| Sequence | MDLARKEFLRGNGLAAGKMNISIDLDTNYAELVLNVGRVTLGENNRKMKDC QLRKQQNENVSRAVCALLNSGGGVIAEVENKGYSYKKDGIGLDLENSFSNM LPFVFNFLDFMQNGNYFHIFVKSWSLETSGPQIATLSSSLYKRDVTSKVMNA SAALEFLKDMEKTGGRAYLRPEFPAKRACVDVQEESENMEALAADFFNRTELG YKEKLTFTTESTHVEIKNFSTEKLLQRITEILPQYVSAFANTDGGYLFVGLNEDKE VIGFKAEKSYLTKLEEVTKNSIGKLPVHHFCVEKGTINYLCKFLGVYDKGRLCG YVYALRVERFCCAVFAKKPDSWHVKDNRVKQLTEKEWIQFMVDSEPVCEELP SPASTSSPVSQSYPREYINFKIQPLRYHLPGLSEKITCAPKTFCRNLFSQHEGL KQLICEEMGSVNKGSLIFSRWSLDLGLQENHKVLC DALLISQDKPPVLYTFHM VQDEEFKDYSTQTAQTLKQKLA KIGGYTKKVCVMTKIFYLSPEGKTS CQYDLN SQVIYPESYYWTTAQT MKDLEKALSNI L PKENQIFL FVCLFRFCLFVCWFVCF LR |
| Research Area | others |
| Source | in vitro E.coli expression system |
| Gene Names | SLFN12L |
| Expression Region | 1-588aa |
| Notes | Repeated freezing and thawing is not recommended. Store working aliquots at 4°C for up to one week. |
| Tag Info | N-terminal 10xHis-tagged and C-terminal Myc-tagged |
| Mol. Weight | 72.1kDa |
| Protein Description | Full Length |
| Image | |



(Tris-Glycine gel) Discontinuous SDS-PAGE (reduced) with 5% enrichment gel and 15% separation gel.



Based on the SEQUEST from database of E.coli host and target protein, the LC-MS/MS Analysis result of CSB-CF021762HU could indicate that this peptide derived from E.coli-expressed Homo sapiens (Human) SLFN12L.



Based on the SEQUEST from database of E.coli host and target protein, the LC-MS/MS Analysis result of CSB-CF021762HU could indicate that this peptide derived from E.coli-expressed Homo sapiens (Human) SLFN12L.