



Recombinant Human Interleukin-1 receptor type 1(IL1R1)

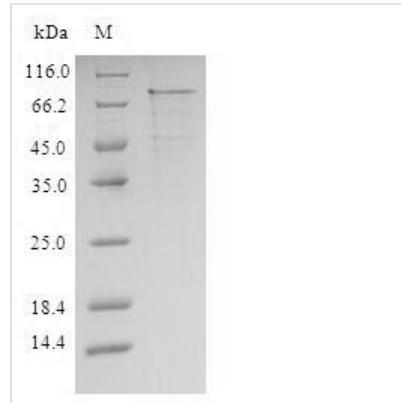
Product Code	CSB-CF011621HU
Relevance	Receptor for IL1A, IL1B and IL1RN. After binding to interleukin-1 associates with the coreceptor IL1RAP to form the high affinity interleukin-1 receptor complex which mediates interleukin-1-dependent activation of NF-kappa-B, MAPK and other pathways. Signaling involves the recruitment of adapter molecules such as TOLLIP, MYD88, and IRAK1 or IRAK2 via the respective TIR domains of the receptor/coreceptor subunits. Binds ligands with comparable affinity and binding of antagonist IL1RN prevents association with IL1RAP to form a signaling complex.
Storage	The shelf life is related to many factors, storage state, buffer ingredients, storage temperature and the stability of the protein itself. Generally, the shelf life of liquid form is 6 months at -20°C/-80°C. The shelf life of lyophilized form is 12 months at -20°C/-80°C.
Uniprot No.	P14778
Storage Buffer	Tris-based buffer,50% glycerol
Product Type	Transmembrane Protein
Species	Homo sapiens (Human)
Purity	Greater than 85% as determined by SDS-PAGE.
Sequence	LEADKCKEREEKIILVSSANEIDVRPCPLNPNEHKGITWYKDDSKTPVSTEQA SRIHQHKEKLWFVPAKVEDSGHYCVVRNSSYCLRIKISAKFVENEPNLCYNA QAIFKQKLPVAGDGLVCPYMEFFKNENNELPKLQWYKDCKPLLLDNIHFSGV KDRLIVMNVAEKHRGNYTCHASYTYLGKQYPITRVIEFITLEENKPTRPVIVSPA NETMEVDLGSQIQLICNVTGQLSDIAYWKWNGSVIDEDDPVLGEDIYYSVENPA NKRRSTLITVLNISEIESRFYKHPFTCFKANTHGIDAAYIQLIYPVTNFQKHMIGIC VTLTVIIVCSVFIYKIFKIDIVLWYRDSCYDFLPIKASDGKTYDAYILYPKTVGEGS TSDCDIFVFKVLPEVLEKQCGYKLFYGRDDYVGEDIVEVINENVKKSRRLLIILV RETSGFSWLGGSSSEEQIAMYNALVQDGIKVVLELEKIQDYEKMPESIKFIKQK HGAIRWSGDFTQGPQSAKTRFWKNVRYHMPVQRRSPSSKHQLLSPATKEKL QREAHVPLG
Research Area	Immunology
Source	in vitro E.coli expression system
Gene Names	IL1R1
Protein Names	CD121 antigen-like family member A Interleukin-1 receptor alpha
Expression Region	18-569aa
Notes	Repeated freezing and thawing is not recommended. Store working aliquots at 4°C for up to one week.
Tag Info	N-terminal 10xHis-SUMO-tagged and C-terminal Myc-tagged



Mol. Weight 83.5kDa

Protein Description Full Length of Mature Protein

Image



(Tris-Glycine gel) Discontinuous SDS-PAGE (reduced) with 5% enrichment gel and 15% separation gel.