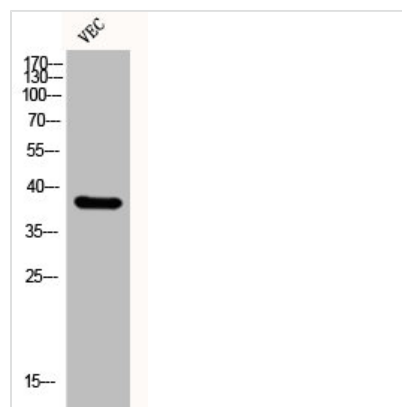




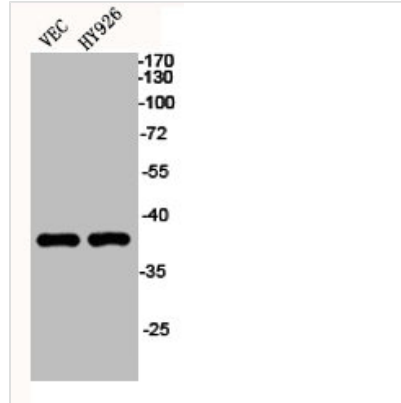
# KLF1/KLF5/KLF7 Antibody

<b>Product Code</b>	CSB-PA002315
<b>Storage</b>	Upon receipt, store at -20°C or -80°C. Avoid repeated freeze.
<b>Uniprot No.</b>	Q13351/Q13887/O75840
<b>Immunogen</b>	Synthesized peptide derived from the C-terminal region of Human EKLF/CKLF/UKLF.
<b>Raised In</b>	Rabbit
<b>Species Reactivity</b>	Human,Mouse,Rat
<b>Tested Applications</b>	WB,IF,ELISA;WB:1/500-1/2000.IF:1/200-1/1000.ELISA:1/20000
<b>Form</b>	Liquid
<b>Conjugate</b>	Non-conjugated
<b>Storage Buffer</b>	Liquid in PBS containing 50% glycerol, 0.5% BSA and 0.02% sodium azide.
<b>Purification Method</b>	The antibody was affinity-purified from rabbit antiserum by affinity-chromatography using epitope-specific immunogen.
<b>Isotype</b>	IgG
<b>Alias</b>	KLF1; EKLF; Krueppel-like factor 1; Erythroid krueppel-like transcription factor; EKLF; KLF5; BTEB2; CKLF; IKLF; Krueppel-like factor 5; Basic transcription element-binding protein 2; BTE-binding protein 2; Colon krueppel-like factor; GC-bo
<b>Target Names</b>	KLF1/KLF5/KLF7

## Image



Western Blot analysis of VEC cells using EKLF/CKLF/UKLF Polyclonal Antibody



Western Blot analysis of VEC HY926 cells using EKLF/CKLF/UKLF Polyclonal Antibody