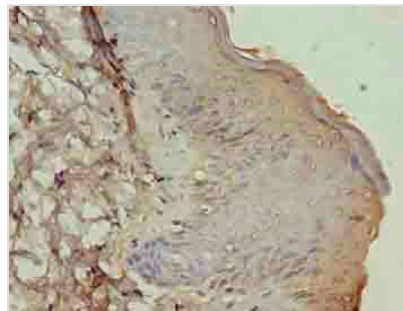




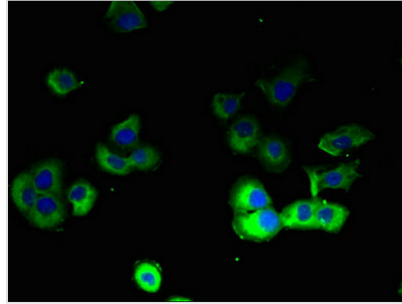
ATP12A Antibody

Product Code	CSB-PA002316LA01HU
Storage	Upon receipt, store at -20°C or -80°C. Avoid repeated freeze.
Uniprot No.	P54707
Immunogen	Recombinant Human Potassium-transporting ATPase alpha chain 2 protein (171-306AA)
Raised In	Rabbit
Species Reactivity	Human
Tested Applications	ELISA, IHC, IF; Recommended dilution: IHC:1:20-1:200, IF:1:50-1:200
Relevance	Catalyzes the hydrolysis of ATP coupled with the exchange of H(+) and K(+) ions across the plasma membrane. Responsible for potassium absorption in various tissues.
Form	Liquid
Conjugate	Non-conjugated
Storage Buffer	Preservative: 0.03% Proclin 300 Constituents: 50% Glycerol, 0.01M PBS, PH 7.4
Purification Method	>95%, Protein G purified
Isotype	IgG
Clonality	Polyclonal
Alias	Potassium-transporting ATPase alpha chain 2 (EC 3.6.3.10) (Non-gastric H(+)/K(+) ATPase subunit alpha) (Proton pump), ATP12A, ATP1AL1
Species	Human
Research Area	Signal Transduction
Target Names	ATP12A

Image



Immunohistochemistry of paraffin-embedded human skin tissue using CSB-PA002316LA01HU at dilution of 1:100



Immunofluorescent analysis of A431 cells using CSB-PA002316LA01HU at dilution of 1:100 and Alexa Fluor 488-conjugated AffiniPure Goat Anti-Rabbit IgG(H+L)