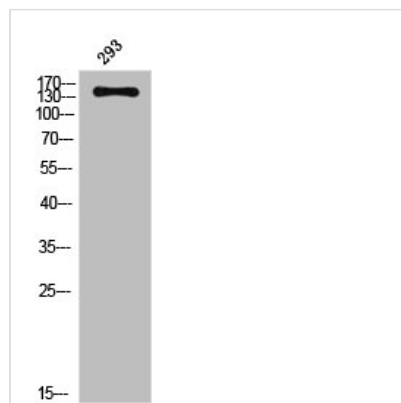




# KDR Antibody

<b>Product Code</b>	CSB-PA009638
<b>Storage</b>	Upon receipt, store at -20°C or -80°C. Avoid repeated freeze.
<b>Uniprot No.</b>	P35968
<b>Immunogen</b>	Synthesized peptide derived from Human Flk-1 around the non-phosphorylation site of Y1214.
<b>Raised In</b>	Rabbit
<b>Species Reactivity</b>	Human,Mouse,Rat
<b>Tested Applications</b>	WB,IHC,IF,ELISA;WB:1/500-1/2000.IHC:1/100-1/300.IF:1/200-1/1000.ELISA:1/20000
<b>Form</b>	Liquid
<b>Conjugate</b>	Non-conjugated
<b>Storage Buffer</b>	Liquid in PBS containing 50% glycerol, 0.5% BSA and 0.02% sodium azide.
<b>Purification Method</b>	The antibody was affinity-purified from rabbit antiserum by affinity-chromatography using epitope-specific immunogen.
<b>Isotype</b>	IgG
<b>Alias</b>	KDR; FLK1; VEGFR2; Vascular endothelial growth factor receptor 2; VEGFR-2; Fetal liver kinase 1; FLK-1; Kinase insert domain receptor; KDR; Protein-tyrosine kinase receptor flk-1; CD antigen CD309
<b>Species</b>	Homo sapiens (Human)
<b>Target Names</b>	KDR

## Image



Western Blot analysis of 293 cells using Flk-1 Polyclonal Antibody