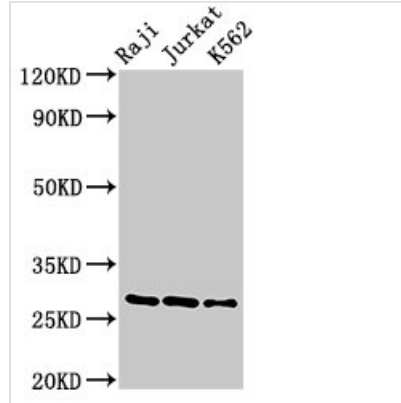




Gzma Antibody

Product Code	CSB-PA010081LA01MO
Storage	Upon receipt, store at -20°C or -80°C. Avoid repeated freeze.
Uniprot No.	P11032
Immunogen	Recombinant Mouse Granzyme A protein (29-260AA)
Raised In	Rabbit
Species Reactivity	Mouse, Human
Tested Applications	ELISA, WB; Recommended dilution: WB:1:500-1:5000
Relevance	Abundant protease in the cytosolic granules of cytotoxic T-cells and NK-cells which activates caspase-independent cell death with morphological features of apoptosis when delivered into the target cell through the immunological synapse. It cleaves after Lys or Arg. Cleaves APEX1 after '\Lys-31\' and destroys its oxidative repair activity. Cleaves the nucleosome assembly protein SET after '\Lys-189\', which disrupts its nucleosome assembly activity and allows the SET complex to translocate into the nucleus to nick and degrade the DNA (By similarity).
Form	Liquid
Conjugate	Non-conjugated
Storage Buffer	Preservative: 0.03% Proclin 300 Constituents: 50% Glycerol, 0.01M PBS, PH 7.4
Purification Method	>95%, Protein G purified
Isotype	IgG
Clonality	Polyclonal
Alias	Granzyme A (EC 3.4.21.78) (Autocrine thymic lymphoma granzyme-like serine protease) (CTLA-3) (Fragmentin-1) (T cell-specific serine protease 1) (TSP-1), Gzma, Ctla-3 Ctla3 Mtsp-1
Species	Mus musculus (Mouse)
Research Area	Others
Target Names	Gzma
Image	

**Western Blot**

Positive WB detected in: Raji whole cell lysate,
Jurkat whole cell lysate, K562 whole cell lysate

All lanes: Gzma antibody at 3 μ g/ml

Secondary

Goat polyclonal to rabbit IgG at 1/50000 dilution

Predicted band size: 29 kDa

Observed band size: 29 kDa