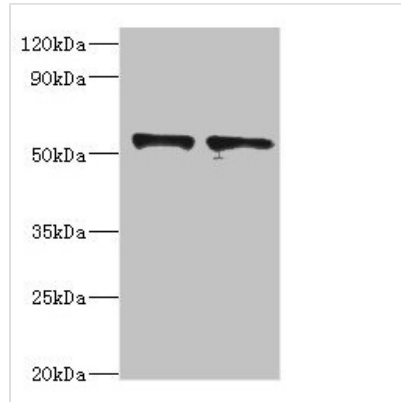




SPTLC1 Antibody

Product Code	CSB-PA022639ESR1HU
Storage	Upon receipt, store at -20°C or -80°C. Avoid repeated freeze.
Uniprot No.	O15269
Immunogen	Recombinant Human Serine palmitoyltransferase 1 protein (37-310AA)
Raised In	Rabbit
Species Reactivity	Human
Tested Applications	ELISA, WB, IHC; Recommended dilution: WB:1:500-1:2000, IHC:1:20-1:200
Relevance	Serine palmitoyltransferase (SPT). The heterodimer formed with SPTLC2 or SPTLC3 constitutes the catalytic core. The composition of the serine palmitoyltransferase (SPT) complex determines the substrate preference. The SPTLC1-SPTLC2-SPTSSA complex shows a strong preference for C16-CoA substrate, while the SPTLC1-SPTLC3-SPTSSA isozyme uses both C14-CoA and C16-CoA as substrates, with a slight preference for C14-CoA. The SPTLC1-SPTLC2-SPTSSB complex shows a strong preference for C18-CoA substrate, while the SPTLC1-SPTLC3-SPTSSB isozyme displays an ability to use a broader range of acyl-CoAs, without apparent preference.
Form	Liquid
Conjugate	Non-conjugated
Storage Buffer	PBS with 0.02% sodium azide, 50% glycerol, pH7.3.
Purification Method	Antigen Affinity Purified
Isotype	IgG
Clonality	Polyclonal
Alias	Serine palmitoyltransferase 1 (EC 2.3.1.50) (Long chain base biosynthesis protein 1) (LCB 1) (Serine-palmitoyl-CoA transferase 1) (SPT 1) (SPT1), SPTLC1, LCB1
Species	Human
Research Area	Cardiovascular
Target Names	SPTLC1
Image	

**Western blot**All lanes: SPTLC1 antibody at 8 μ g/ml

Lane 1: 293T whole cell lysate

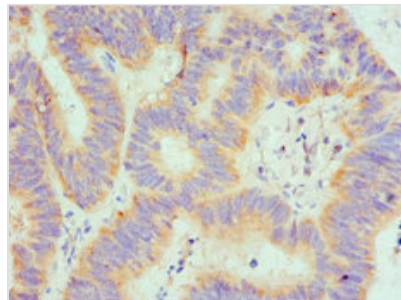
Lane 2: MCF-7 whole cell lysate

Secondary

Goat polyclonal to rabbit at 1/10000 dilution

Predicted band size: 53, 17 kDa

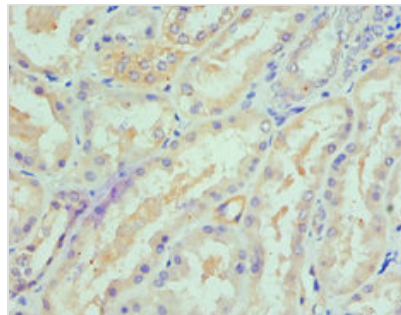
Observed band size: 53 kDa



Immunohistochemistry of paraffin-embedded

human colon cancer using CSB-

PA022639ESR1HU at dilution of 1:100



Immunohistochemistry of paraffin-embedded

human kidney tissue using CSB-

PA022639ESR1HU at dilution of 1:100