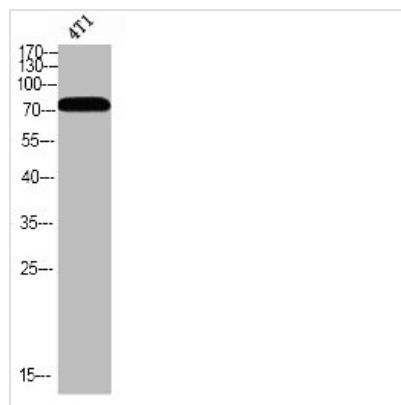




# Phospho-BMX (Y566) Antibody

<b>Product Code</b>	CSB-PA050105
<b>Storage</b>	Upon receipt, store at -20°C or -80°C. Avoid repeated freeze.
<b>Uniprot No.</b>	P51813
<b>Immunogen</b>	Synthesized peptide derived from Human Bmx around the phosphorylation site of Y566.
<b>Raised In</b>	Rabbit
<b>Species Reactivity</b>	Human,Mouse
<b>Tested Applications</b>	WB,IHC,ELISA;WB:1/500-1/2000.IHC:1/100-1/300.ELISA:1/10000
<b>Form</b>	Liquid
<b>Conjugate</b>	Non-conjugated
<b>Storage Buffer</b>	Liquid in PBS containing 50% glycerol, 0.5% BSA and 0.02% sodium azide.
<b>Purification Method</b>	The antibody was affinity-purified from rabbit antiserum by affinity-chromatography using epitope-specific immunogen.
<b>Isotype</b>	IgG
<b>Alias</b>	BMX; Cytoplasmic tyrosine-protein kinase BMX; Bone marrow tyrosine kinase gene in chromosome X protein; Epithelial and endothelial tyrosine kinase; ETK; NTK38
<b>Species</b>	Homo sapiens (Human)
<b>Target Names</b>	BMX

## Image



Western blot analysis of 4T1 using p-Bmx (Y566) antibody.