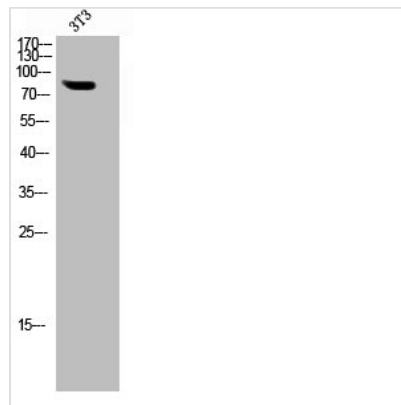




SYN1 Antibody

Product Code	CSB-PA050195
Storage	Upon receipt, store at -20°C or -80°C. Avoid repeated freeze.
Uniprot No.	P17600
Immunogen	Synthesized peptide derived from Human Synapsin I around the non-phosphorylation site of S62.
Raised In	Rabbit
Species Reactivity	Human,Mouse,Rat
Tested Applications	WB,IHC,ELISA;WB:1/500-1/2000.IHC:1/100-1/300.ELISA:1/5000
Form	Liquid
Conjugate	Non-conjugated
Storage Buffer	Liquid in PBS containing 50% glycerol, 0.5% BSA and 0.02% sodium azide.
Purification Method	The antibody was affinity-purified from rabbit antiserum by affinity-chromatography using epitope-specific immunogen.
Isotype	IgG
Alias	SYN1; Synapsin-1; Brain protein 4.1; Synapsin I
Species	Homo sapiens (Human)
Target Names	SYN1

Image



Western Blot analysis of NIH-3T3 cells using Synapsin I Polyclonal Antibody