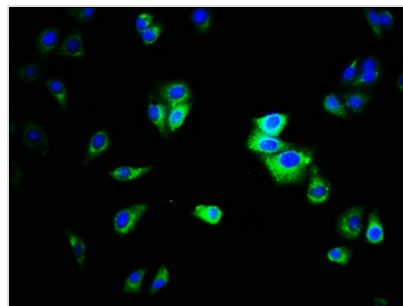




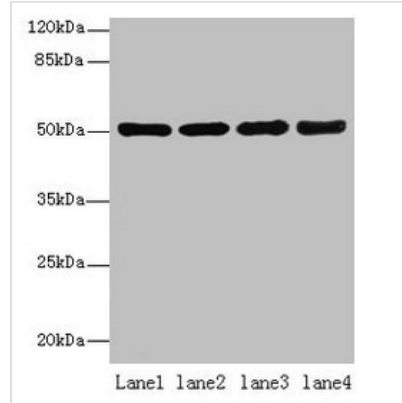
CEACAM1 Antibody

Product Code	CSB-PA10749A0Rb
Storage	Upon receipt, store at -20°C or -80°C. Avoid repeated freeze.
Uniprot No.	P13688
Immunogen	Recombinant Human Carcinoembryonic antigen-related cell adhesion molecule 1 protein (35-428AA)
Raised In	Rabbit
Species Reactivity	Human
Tested Applications	ELISA, WB, IF; Recommended dilution: WB:1:1000-1:5000, IF:1:200-1:500
Form	Liquid
Conjugate	Non-conjugated
Storage Buffer	Preservative: 0.03% Proclin 300 Constituents: 50% Glycerol, 0.01M PBS, PH 7.4
Purification Method	>95%, Protein G purified
Isotype	IgG
Clonality	Polyclonal
Alias	Carcinoembryonic antigen-related cell adhesion molecule 1 (Biliary glycoprotein 1) (BGP-1) (CD antigen CD66a), CEACAM1, BGP BGP1
Species	Human
Research Area	Tags & Cell Markers
Target Names	CEACAM1

Image



Immunofluorescence staining of HepG2 cells with CSB-PA10749A0Rb at 1:333, counter-stained with DAPI. The cells were fixed in 4% formaldehyde, permeabilized using 0.2% Triton X-100 and blocked in 10% normal Goat Serum. The cells were then incubated with the antibody overnight at 4°C. The secondary antibody was Alexa Fluor 488-conjugated AffiniPure Goat Anti-Rabbit IgG(H+L).

**Western blot**All lanes: CEACAM1 antibody at 10 μ g/ml

Lane 1: HT29 whole cell lysate

Lane 2: HCT116 whole cell lysate

Lane 3: COLO205 whole cell lysate

Lane 4: HepG2 whole cell lysate

Secondary

Goat polyclonal to rabbit IgG at 1/10000 dilution

Predicted band size: 58, 46, 36, 39, 51, 47, 28, 44, 52, 40 kDa

Observed band size: 51 kDa