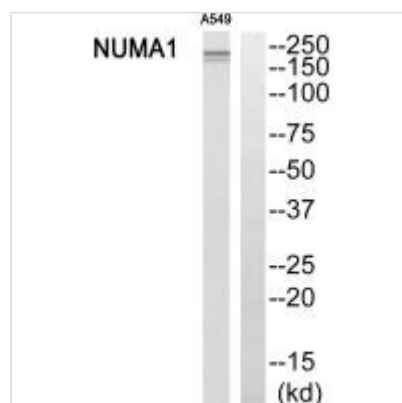




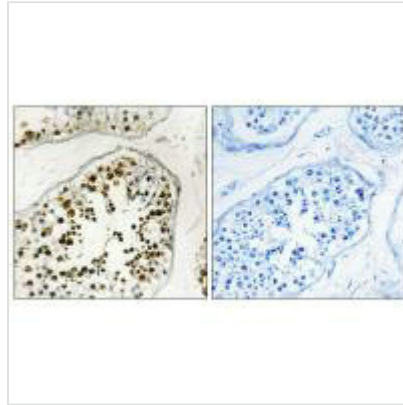
NUMA1 Antibody

Product Code	CSB-PA114858
Storage	Upon receipt, store at -20°C or -80°C. Avoid repeated freeze.
Uniprot No.	Q14980
Immunogen	Synthesized peptide derived from internal of Human NUMA1.
Raised In	Rabbit
Species Reactivity	Human
Specificity	The antibody detects endogenous levels of total NUMA1 protein.
Tested Applications	ELISA,WB,IHC;WB:1:500-1:3000,IHC:1:50-1:100
Relevance	<p>Highly abundant component of the nuclear matrix where it may serve a non-mitotic structural role, occupies the majority if the nuclear volume. Required for maintenance and establishment of the mitotic spindle poles, functioning as a tether linking bulk microtubules of the spindle to centrosomes. May be involved in coordination of the alignment of the mitotic spindle to the cellular polarity axis, which is a prerequisite for asymmetric cell divisions.</p> <p>Yang C.H., J. Cell Biol. 116:1303-1317(1992). Compton D.A., J. Cell Biol. 116:1395-1408(1992). Maekawa T., J. Cell Sci. 105:589-600(1993).</p>
Form	Rabbit IgG in phosphate buffered saline (without Mg ²⁺ and Ca ²⁺), pH 7.4, 150mM NaCl, 0.02% sodium azide and 50% glycerol.
Purification Method	The antibody was affinity-purified from rabbit antiserum by affinity-chromatography using epitope-specific immunogen.
Clonality	Polyclonal
Alias	Nuclear mitotic apparatus protein 1; NuMA protein; SP-H antigen;
Product Type	Polyclonal Antibody
Species	Homo sapiens (Human)
Target Names	NUMA1

Image



Western blot analysis of extracts from A549 cells, using NUMA1 antibody.



Immunohistochemistry analysis of paraffin-embedded human testis tissue using NUMA1 antibody.