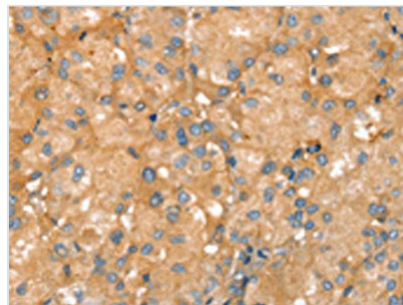




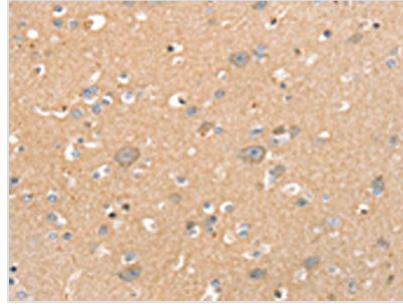
SLC41A2 Antibody

Product Code	CSB-PA151893
Storage	Upon receipt, store at -20°C or -80°C. Avoid repeated freeze.
Uniprot No.	Q96JW4
Immunogen	Synthetic peptide of Human SLC41A2
Raised In	Rabbit
Species Reactivity	Human, Mouse
Tested Applications	ELISA, IHC; ELISA: 1:1000-1:2000, IHC: 1:20-1:100
Relevance	SLC41A2 (solute carrier family 41, member 2), also known as SLC41A1-L, is a 573 amino acid multi-pass membrane protein that belongs to the SLC41A transporter family that includes SLC41A1 and SLC41A3. Expressed in lymphocytes and localizing to the cell membrane, SLC41A2 contains twelve transmembrane domains, three myristoylation sequences, numerous possible phosphorylation sites and a putative N-glycosylation site. SLC41A2 is believed to function as a plasma-membrane magnesium transporter. Magnesium, a cofactor for ATP, plays a vital role in metabolic and biochemical processes. The transport of magnesium across membranes is essential for maintaining magnesium homeostasis and is fundamental to vertebrate metabolism.
Form	Liquid
Conjugate	Non-conjugated
Storage Buffer	-20°C, pH7.4 PBS, 0.05% NaN ₃ , 40% Glycerol
Purification Method	Antigen affinity purification
Isotype	IgG
Species	Homo sapiens (Human)
Target Names	SLC41A2

Image



The image on the left is immunohistochemistry of paraffin-embedded Human liver cancer tissue using CSB-PA151893 (SLC41A2 Antibody) at dilution 1/20, on the right is treated with synthetic peptide. (Original magnification: x200)



The image on the left is immunohistochemistry of paraffin-embedded Human brain tissue using CSB-PA151893(SLC41A2 Antibody) at dilution 1/20, on the right is treated with synthetic peptide. (Original magnification: x200)