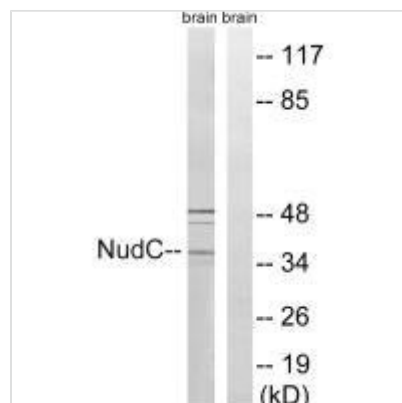




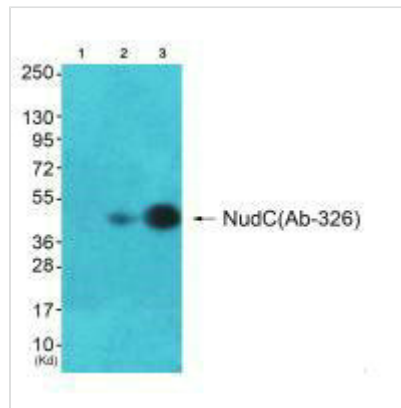
NUDC (Ab-326) Antibody

Product Code	CSB-PA179383
Storage	Upon receipt, store at -20°C or -80°C. Avoid repeated freeze.
Uniprot No.	Q9Y266
Immunogen	Synthesized non-phosphopeptide derived from Human NudC around the phosphorylation site of serine 326 (D-F-S(p)-K-A).
Raised In	Rabbit
Species Reactivity	Human, Mouse
Specificity	The antibody detects endogenous levels of total NudC protein.
Tested Applications	ELISA, WB; WB: 1:500-1:3000
Relevance	<p>Plays a role in neurogenesis and neuronal migration By similarity. Necessary for correct formation of mitotic spindles and chromosome separation during mitosis. Necessary for cytokinesis and cell proliferation.</p> <p>Miller B.A., Exp. Hematol. 27:742-750(1999). Matsumoto N., Hum. Genet. 104:498-504(1999). Wiemann S., Genome Res. 11:422-435(2001).</p>
Form	Rabbit IgG in phosphate buffered saline (without Mg ²⁺ and Ca ²⁺), pH 7.4, 150mM NaCl, 0.02% sodium azide and 50% glycerol.
Purification Method	The antibody was affinity-purified from rabbit antiserum by affinity-chromatography using epitope-specific immunogen.
Clonality	Polyclonal
Alias	MNUDC protein; Nuclear distribution gene C (A.nidulans) homolog; SIG-92;
Product Type	Polyclonal Antibody
Species	Homo sapiens (Human)
Target Names	NUDC

Image



Western blot analysis of extracts from rat brain cells, using NudC (Ab-326) antibody.



Western blot analysis of extracts from A549 cells and HepG2(Lane 3) cells, using NudC (Ab-326) antibody. The lane on the left is treated with synthesized peptide.