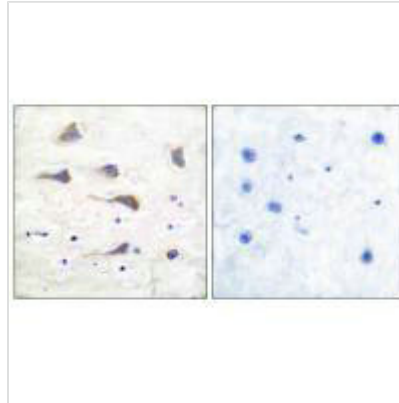


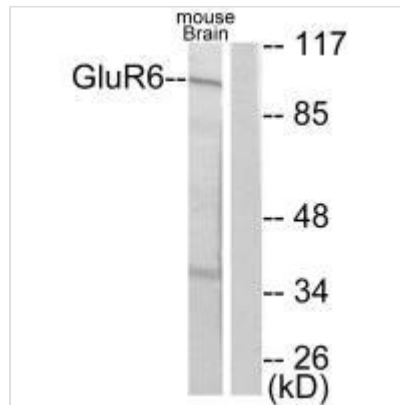


GRM6 Antibody

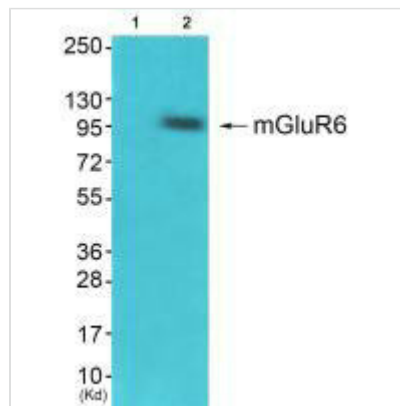
Product Code	CSB-PA180398
Storage	Upon receipt, store at -20°C or -80°C. Avoid repeated freeze.
Uniprot No.	O15303
Immunogen	Synthesized peptide derived from Human GluR6.
Raised In	Rabbit
Species Reactivity	Human
Specificity	The antibody detects endogenous levels of total GluR6 protein.
Tested Applications	ELISA,WB,IHC;WB:1:500-1:3000,IHC:1:50-1:100
Relevance	<p>G-protein coupled receptor for glutamate. Ligand binding causes a conformation change that triggers signaling via guanine nucleotide-binding proteins (G proteins) and modulates the activity of down-stream effectors, such as adenylate cyclase. Signaling inhibits adenylate cyclase activity By similarity. Signaling stimulates TRPM1 channel activity and Ca²⁺ uptake. Required for normal vision.</p> <p>Inga Everts, J. Neurosci., Feb 1999; 19: 916. Gregory D. Salinas, J. Biol. Chem., Dec 2006; 281: 40164 - 40173. Sheng Yan, J. Neurosci., Jan 2004; 24: 679. Xiao-Mei Liu, J. Biol. Chem., Jun 2006; 281: 17432 - 17445.</p>
Form	Rabbit IgG in phosphate buffered saline (without Mg ²⁺ and Ca ²⁺), pH 7.4, 150mM NaCl, 0.02% sodium azide and 50% glycerol.
Purification Method	The antibody was affinity-purified from rabbit antiserum by affinity-chromatography using epitope-specific immunogen.
Clonality	Polyclonal
Alias	EAA4; GLR6; MGC74427; bA487F5.1 (glutamate receptor; ionotropic
Product Type	Polyclonal Antibody
Species	Homo sapiens (Human)
Target Names	GRM6
Image	



Immunohistochemical analysis of paraffin-embedded human brain tissue using GluR6 antibody.



Western blot analysis of extracts from mouse brain, using GluR6 antibody.



Western blot analysis of extracts from HepG2 cells (Lane 2), using mGluR6 antibody. The lane on the left is treated with synthesized peptide.