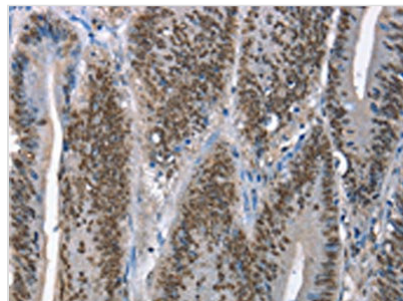




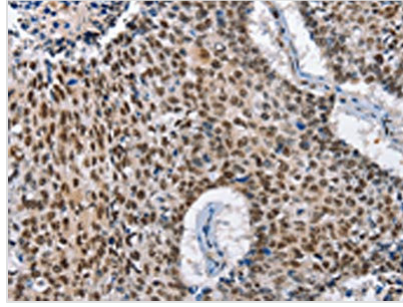
GNRH1 Antibody

Product Code	CSB-PA199057
Storage	Upon receipt, store at -20°C or -80°C. Avoid repeated freeze.
Uniprot No.	P01148
Immunogen	Fusion protein of Human GNRH1
Raised In	Rabbit
Species Reactivity	Human
Tested Applications	ELISA,IHC;ELISA:1:2000-1:10000,IHC:1:100-1:300
Relevance	The protein encoded by this gene is secreted and then cleaved to form the 10 aa luteinizing hormone-releasing hormone (LHRH, also known as gonadoliberin-1), and prolactin release-inhibiting factor (also known as GnRH-associated peptide 1). LHRH stimulates the release of luteinizing and follicle stimulating hormones, which are important for reproduction. Mutation in this gene are associated with hypogonadotropic hypogonadism. Alternatively spliced transcript variants have been described for this gene.
Form	Liquid
Conjugate	Non-conjugated
Storage Buffer	-20°C, pH7.4 PBS, 0.05% NaN ₃ , 40% Glycerol
Purification Method	Antigen affinity purification
Isotype	IgG
Alias	gonadotropin-releasing hormone 1 (luteinizing-releasing hormone)
Species	Homo sapiens (Human)
Target Names	GNRH1

Image



The image on the left is immunohistochemistry of paraffin-embedded Human colon cancer tissue using CSB-PA199057(GNRH1 Antibody) at dilution 1/65, on the right is treated with fusion protein. (Original magnification: x200)



The image on the left is immunohistochemistry of paraffin-embedded Human lung cancer tissue using CSB-PA199057(GNRH1 Antibody) at dilution 1/65, on the right is treated with fusion protein. (Original magnification: ×200)