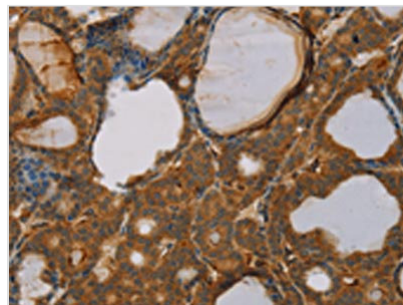




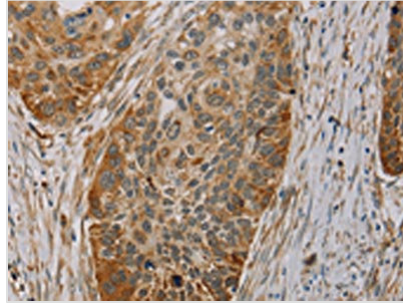
PAGE2 Antibody

Product Code	CSB-PA209755
Storage	Upon receipt, store at -20°C or -80°C. Avoid repeated freeze.
Uniprot No.	Q7Z2X7
Immunogen	Fusion protein of Human PAGE2
Raised In	Rabbit
Species Reactivity	Human
Tested Applications	ELISA,IHC;ELISA:1:1000-1:2000,IHC:1:25-1:100
Relevance	PAGE-2 (prostate-associated gene 2 protein), also known as P antigen family member 2B, GAGEC2, CT16.4 or GAGEE2, is a 111 amino acid protein that is expressed primarily in testis and belongs to the GAGE family. PAGE-2B (prostate-associated gene 2B protein), also designated putative G antigen family E member 3, P antigen family member 2B, CT16.5 or GAGEE3, also consists of 111 amino acids and is a member of the GAGE family. Both proteins are encoded by genes that map to human chromosome X, which consists of about 153 million base pairs and nearly 1,000 genes. The combination of a X and Y chromosome lead to normal male development while two copies of X lead to normal female development.
Form	Liquid
Conjugate	Non-conjugated
Storage Buffer	-20°C, pH7.4 PBS, 0.05% NaN ₃ , 40% Glycerol
Purification Method	Antigen affinity purification
Isotype	IgG
Species	Homo sapiens (Human)
Target Names	PAGE2

Image



The image on the left is immunohistochemistry of paraffin-embedded Human thyroid cancer tissue using CSB-PA209755(PAGE2 Antibody) at dilution 1/20, on the right is treated with fusion protein. (Original magnification: ×200)



The image on the left is immunohistochemistry of paraffin-embedded Human esophagus cancer tissue using CSB-PA209755(PAGE2 Antibody) at dilution 1/20, on the right is treated with fusion protein. (Original magnification: ×200)