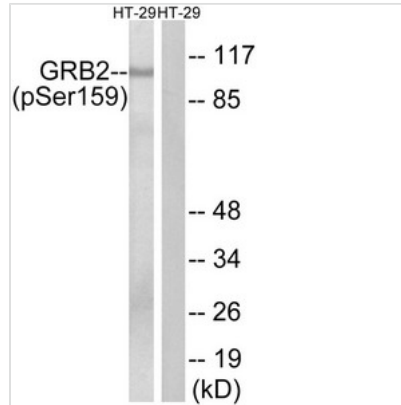




Phospho-GAB2 (Ser159) Antibody

Product Code	CSB-PA210856
Storage	Upon receipt, store at -20°C or -80°C. Avoid repeated freeze.
Uniprot No.	Q9UQC2
Immunogen	Peptide sequence around phosphorylation site of Serine 159(K-S-S(p)-A-P) derived from Human GRB2.
Raised In	Rabbit
Species Reactivity	Human,Mouse,Rat
Specificity	The antibody detects endogenous levels of GRB2 only when phosphorylated at serine 159.
Tested Applications	ELISA,WB;WB:1:500-1:1000
Relevance	<p>This gene is a member of the GRB2-associated binding protein (GAB) gene family and is similar to the GAB1 gene. These proteins contain pleckstrin homology (PH) domain, and bind SHP2 tyrosine phosphatase and GRB2 adapter protein. They act as adapters for transmitting various signals in response to stimuli through cytokine and growth factor receptors, and T- and B-cell antigen receptors. The protein encoded by this gene is the principal activator of phosphatidylinositol-3 kinase in response to activation of the high affinity IgE receptor. Two alternatively spliced transcripts encoding different isoforms have been described for this gene.</p> <p>Nishida K., Blood 93:1809-1816(1999). Nagase T., DNA Res. 5:31-39(1998). Taylor T.D., Nature 440:497-500(2006).</p>
Form	Rabbit IgG in phosphate buffered saline (without Mg ²⁺ and Ca ²⁺), pH 7.4, 150mM NaCl, 0.02% sodium azide and 50% glycerol.
Purification Method	Antibodies were produced by immunizing rabbits with synthetic phosphopeptide and KLH conjugates. Antibodies were purified by affinity-chromatography using epitope-specific phosphopeptide. Non-phospho specific antibodies were removed by chromatography
Clonality	Polyclonal
Alias	GABJ; KIAA0571; pp100;
Product Type	Polyclonal Antibody
Species	Homo sapiens (Human)
Target Names	GAB2
Image	



Western blot analysis of extracts from HT-29 cells treated with serum using GRB2 (Phospho-Ser159) Antibody. The lane on the right is treated with the antigen-specific peptide.

Product Modify

Phospho-Ser159