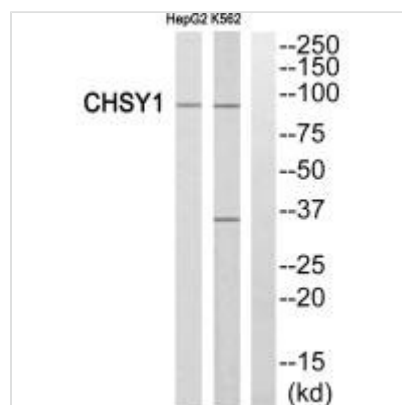




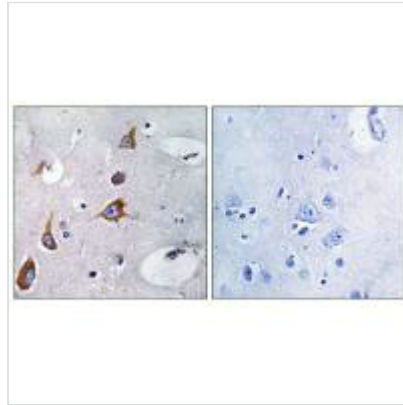
CHSY1 Antibody

Product Code	CSB-PA249636
Storage	Upon receipt, store at -20°C or -80°C. Avoid repeated freeze.
Uniprot No.	Q86X52
Immunogen	Synthesized peptide derived from internal of Human CHSY1.
Raised In	Rabbit
Species Reactivity	Human
Specificity	The antibody detects endogenous levels of total CHSY1 protein.
Tested Applications	ELISA,WB,IHC;WB:1:500-1:3000,IHC:1:50-1:100
Relevance	<p>Has both beta-1,3-glucuronic acid and beta-1,4-N-acetylgalactosamine transferase activity. Transfers glucuronic acid (GlcUA) from UDP-GlcUA and N-acetylgalactosamine (GalNAc) from UDP-GalNAc to the non-reducing end of the elongating chondroitin polymer. Involved in the negative control of osteogenesis likely through the modulation of NOTCH signaling.</p> <p>Kitagawa H., J. Biol. Chem. 276:38721-38726(2001). Nagase T., DNA Res. 6:63-70(1999). Clark H.F., Genome Res. 13:2265-2270(2003).</p>
Form	Rabbit IgG in phosphate buffered saline (without Mg ²⁺ and Ca ²⁺), pH 7.4, 150mM NaCl, 0.02% sodium azide and 50% glycerol.
Purification Method	The antibody was affinity-purified from rabbit antiserum by affinity-chromatography using epitope-specific immunogen.
Clonality	Polyclonal
Alias	carbohydrate (chondroitin) synthase 1; chondroitin glucuronyltransferase II; chondroitin synthase; CHSS1; glucuronosyl-N-acetylgalactosaminyl-proteoglycan 4-beta-N-acetylgalactosaminyltransferase 1
Product Type	Polyclonal Antibody
Species	Homo sapiens (Human)
Target Names	CHSY1

Image



Western blot analysis of extracts from HepG2 cells and K562 cells, using CHSY1 antibody.



Immunohistochemistry analysis of paraffin-embedded human brain tissue, using CHSY1 antibody.