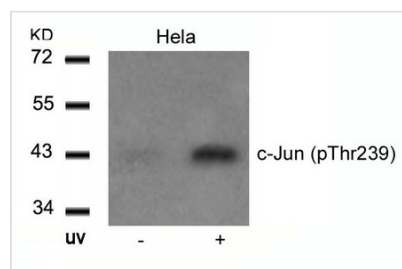




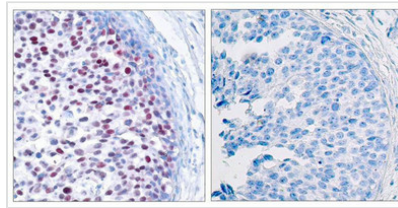
Phospho-JUN (Thr239) Antibody

Product Code	CSB-PA258817
Storage	Upon receipt, store at -20°C or -80°C. Avoid repeated freeze.
Uniprot No.	P05412
Immunogen	Peptide sequence around phosphorylation site of threonine 239 (G-E-T(p)-P-P) derived from Human c-Jun.
Raised In	Rabbit
Species Reactivity	Human,Mouse,Rat
Specificity	The antibody detects endogenous level of c-Jun only when phosphorylated at threonine239.
Tested Applications	ELISA,WB,IHC,IF;WB:1:500-1:1000,IHC:1:50-1:100,IF:1:100-1:200
Relevance	<p>Transcription factor that recognizes and binds to the enhancer heptamer motif 5'-TGA[CG]TCA-3'.</p> <p>Boyle W J, et al. (1991) Cell. 64(3): 573-584. Binetruy B, et al. (1991) Nature. 351: 122-127. Smeal T, et al. (1991) Nature. 354:494-496. Derijard B, et al. (1994) Cell. 76:1025-1037. Kyriakis J M, et al. (1994) Nature. 369: 156-160.</p>
Form	Supplied at 1.0mg/mL in phosphate buffered saline (without Mg ²⁺ and Ca ²⁺), pH 7.4, 150mM NaCl, 0.02% sodium azide and 50% glycerol.
Purification Method	Antibodies were produced by immunizing rabbits with synthetic phosphopeptide and KLH conjugates. Antibodies were purified by affinity-chromatography using epitope-specific phosphopeptide. Non-phospho specific antibodies were removed by chromatography
Clonality	Polyclonal
Alias	AH119; AP1; Jun A; c-Jun; p39
Product Type	Polyclonal Antibody
Species	Homo sapiens (Human)
Target Names	JUN

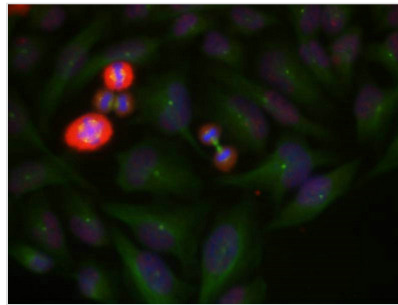
Image



Western blot analysis of extracts from HeLa cells untreated or treated with UV using c-Jun(Phospho-Thr239) Antibody.



Immunohistochemical analysis of paraffin-embedded human breast carcinoma tissue using c-Jun(Phospho-Thr239) Antibody(left) or the same antibody preincubated with blocking peptide(right).



Immunofluorescence staining of methanol-fixed HeLa cells using c-Jun(Phospho-Thr239) Antibody.

Product Modify

Phospho-Thr239