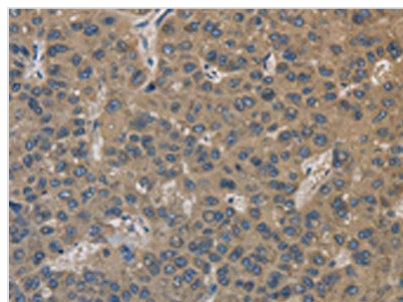




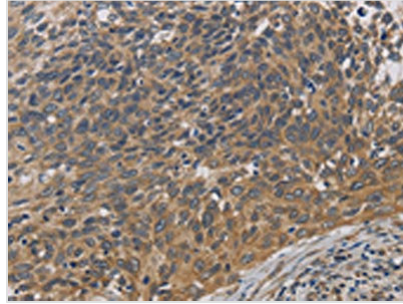
EMC8 Antibody

Product Code	CSB-PA276232
Storage	Upon receipt, store at -20°C or -80°C. Avoid repeated freeze.
Uniprot No.	O43402
Immunogen	Fusion protein of Human EMC8
Raised In	Rabbit
Species Reactivity	Human,Mouse,Rat
Tested Applications	ELISA,WB,IHC;ELISA:1:2000-1:5000,WB:1:500-1:2000,IHC:1:50-1:200
Relevance	COX4NB (Neighbor of COX4) is a 210 amino acid protein encoded by the human gene COX4NB. COX4NB belongs to the UPF0172 (NOC4) family and is found on chromosome 16, adjacent to the gene that encodes COX4. The GAN gene is located on chromosome 16 and, with mutation, may lead to giant axonal neuropathy, a nervous system disorder characterized by increasing malfunction with growth. The rare disorder Rubinstein-Taybi syndrome is also associated with chromosome 16 through the CREBBP gene which encodes a critical CREB binding protein. Crohn's disease is a gastrointestinal inflammatory condition associated with chromosome 16 through the NOD2 gene. An association with systemic lupus erythematosus and a number of other auto-immune disorders with the pericentromeric region of chromosome 16 has led to the identification of SLC5A11 as a potential autoimmune modifier.
Form	Liquid
Conjugate	Non-conjugated
Storage Buffer	-20°C, pH7.4 PBS, 0.05% NaN ₃ , 40% Glycerol
Purification Method	Antigen affinity purification
Isotype	IgG
Alias	ER membrane protein complex subunit 8
Species	Homo sapiens (Human)
Target Names	EMC8

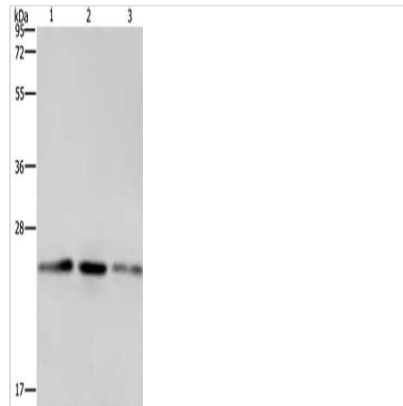
Image



The image on the left is immunohistochemistry of paraffin-embedded Human liver cancer tissue using CSB-PA276232(EMC8 Antibody) at dilution 1/30, on the right is treated with fusion protein. (Original magnification: x200)



The image on the left is immunohistochemistry of paraffin-embedded Human cervical cancer tissue using CSB-PA276232(EMC8 Antibody) at dilution 1/30, on the right is treated with fusion protein. (Original magnification: $\times 200$)



Gel: 10%SDS-PAGE, Lysate: 40 μg , Lane 1-3: A549 cells, Hela cells, HT29 cells, Primary antibody: CSB-PA276232(EMC8 Antibody) at dilution 1/600, Secondary antibody: Goat anti rabbit IgG at 1/8000 dilution, Exposure time: 1 minute