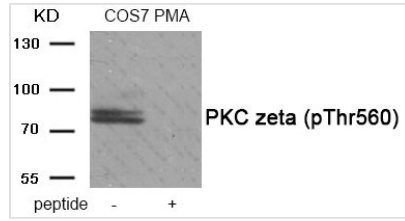




Phospho-PRKCZ (Thr560) Antibody

Product Code	CSB-PA295272
Storage	Upon receipt, store at -20°C or -80°C. Avoid repeated freeze.
Uniprot No.	Q05513
Immunogen	Peptide sequence around phospho rylation site of threonine560(Q-L-T(p)-P-D) derived from Human PKC zeta .
Raised In	Rabbit
Species Reactivity	Human,Mouse,Rat
Specificity	The antibody detects endogenous level of PKC zeta only when phosphorylated at threonine 560.
Tested Applications	ELISA,WB;WB:1:500-1:1000
Relevance	<p>This is a calcium-independent, phospholipid-dependent, serine- and threonine-specific enzyme. Essential for T-cell receptor (TCR)-mediated T-cell activation, but is dispensable during TCR-dependent thymocyte development. Links the TCR signaling complex to the activation of NF-kappa-B in mature T lymphocytes. Required for interleukin-2 (IL2) production. PKC is activated by diacylglycerol which in turn phosphorylates a range of cellular proteins. PKC also serves as the receptor for phorbol esters, a class of tumor promoters.</p> <p>Nakayama M, et al. (2013)Nat Cell Biol 15, 249-60. Mayanglambam A, Bhavanasi D, Vijayan KV, Kunapuli SP (2011)Biochem Pharmacol 82, 505-13. Dettori R, et al. (2009)J Biol Chem 284, 30318-27.</p>
Form	Rabbit IgG in phosphate buffered saline (without Mg ²⁺ and Ca ²⁺), pH 7.4, 150mM NaCl, 0.02% sodium azide and 50% glycerol.
Purification Method	Antibodies were produced by immunizing rabbits with synthetic phosphopeptide and KLH conjugates. Antibodies were purified by affinity-chromatography using epitope-specific phosphopeptide. Non-phospho specific antibodies were removed by chromatogramphy usi
Clonality	Polyclonal
Alias	KPCZ; PKC-zeta; PKC2; PRKCZ; nPKC-zeta
Product Type	Polyclonal Antibody
Species	Homo sapiens (Human)
Target Names	PRKCZ
Image	



Western blot analysis of extracts from COS7 cells treated with PMA using Phospho-PKC zeta (Thr560) antibody. The lane on the right is treated with the antigen-specific peptide.

Product Modify

Phospho-Thr560