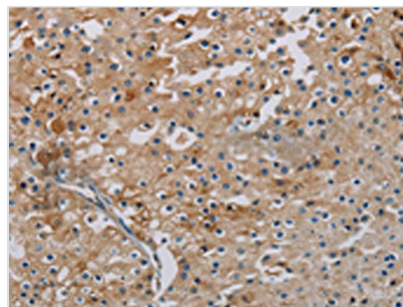




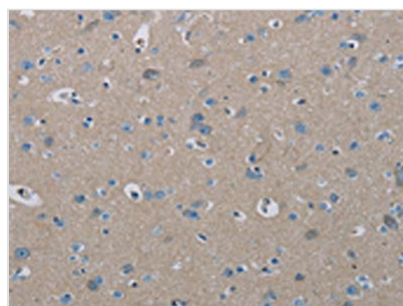
# PHKA2 Antibody

<b>Product Code</b>	CSB-PA572789
<b>Storage</b>	Upon receipt, store at -20°C or -80°C. Avoid repeated freeze.
<b>Uniprot No.</b>	P46019
<b>Immunogen</b>	Synthetic peptide of Human PHKA2
<b>Raised In</b>	Rabbit
<b>Species Reactivity</b>	Human
<b>Tested Applications</b>	ELISA,IHC;ELISA:1:1000-1:2000,IHC:1:25-1:100
<b>Relevance</b>	Phosphorylase kinase is a polymer of 16 subunits, four each of alpha, beta, gamma and delta. The alpha subunit includes the skeletal muscle and hepatic isoforms, and the hepatic isoform is encoded by this gene. The beta subunit is the same in both the muscle and hepatic isoforms, and encoded by one gene. The gamma subunit also includes the skeletal muscle and hepatic isoforms, which are encoded by two different genes. The delta subunit is a calmodulin and can be encoded by three different genes.
<b>Form</b>	Liquid
<b>Conjugate</b>	Non-conjugated
<b>Storage Buffer</b>	-20°C, pH7.4 PBS, 0.05% NaN <sub>3</sub> , 40% Glycerol
<b>Purification Method</b>	Antigen affinity purification
<b>Isotype</b>	IgG
<b>Species</b>	Homo sapiens (Human)
<b>Target Names</b>	PHKA2

## Image



The image on the left is immunohistochemistry of paraffin-embedded Human prostate cancer tissue using CSB-PA572789(PHKA2 Antibody) at dilution 1/30, on the right is treated with synthetic peptide. (Original magnification: x200)



The image on the left is immunohistochemistry of paraffin-embedded Human brain tissue using CSB-PA572789(PHKA2 Antibody) at dilution 1/30, on the right is treated with synthetic peptide. (Original magnification: x200)

