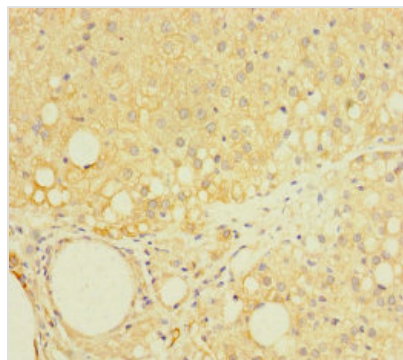




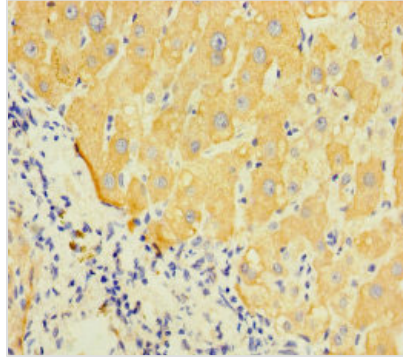
# LAPTM5 Antibody

<b>Product Code</b>	CSB-PA622667LA01HU
<b>Storage</b>	Upon receipt, store at -20°C or -80°C. Avoid repeated freeze.
<b>Uniprot No.</b>	Q13571
<b>Immunogen</b>	Recombinant Human Lysosomal-associated transmembrane protein 5 protein (205-262AA)
<b>Raised In</b>	Rabbit
<b>Species Reactivity</b>	Human
<b>Tested Applications</b>	ELISA, IHC; Recommended dilution: IHC:1:20-1:200
<b>Relevance</b>	May have a special functional role during embryogenesis and in adult hematopoietic cells.
<b>Form</b>	Liquid
<b>Conjugate</b>	Non-conjugated
<b>Storage Buffer</b>	Preservative: 0.03% Proclin 300 Constituents: 50% Glycerol, 0.01M PBS, PH 7.4
<b>Purification Method</b>	>95%, Protein G purified
<b>Isotype</b>	IgG
<b>Clonality</b>	Polyclonal
<b>Alias</b>	Lysosomal-associated transmembrane protein 5 (Lysosomal-associated multitransmembrane protein 5) (Retinoic acid-inducible E3 protein), LAPTM5, KIAA0085
<b>Species</b>	Human
<b>Research Area</b>	Developmental Biology
<b>Target Names</b>	LAPTM5

## Image



Immunohistochemistry of paraffin-embedded human adrenal gland tissue using CSB-PA622667LA01HU at dilution of 1:100



Immunohistochemistry of paraffin-embedded human liver cancer using CSB-PA622667LA01HU at dilution of 1:100