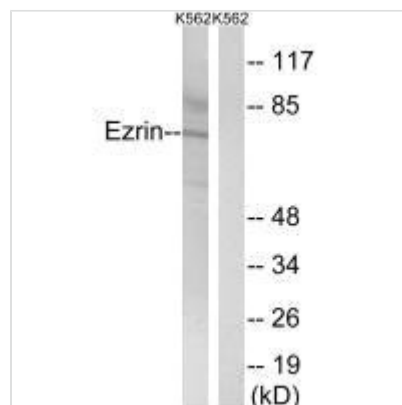




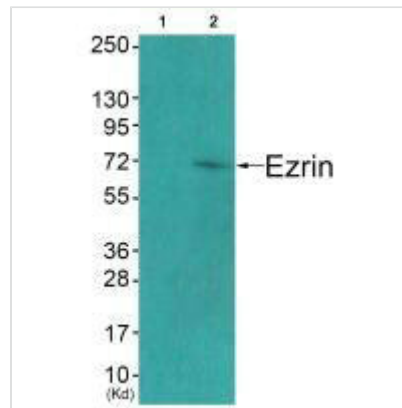
EZR (Ab-478) Antibody

Product Code	CSB-PA679585
Storage	Upon receipt, store at -20°C or -80°C. Avoid repeated freeze.
Uniprot No.	P15311
Immunogen	Synthesized non-phosphopeptide derived from Human Ezrin around the phosphorylation site of tyrosine 478 (P-V-Y(p)-E-P).
Raised In	Rabbit
Species Reactivity	Human, Mouse
Specificity	The antibody detects endogenous levels of total Ezrin protein.
Tested Applications	ELISA, WB; WB: 1:500-1:3000
Relevance	Probably involved in connections of major cytoskeletal structures to the plasma membrane. In epithelial cells, required for the formation of microvilli and membrane ruffles on the apical pole. Along with PLEKHG6, required for normal macropinocytosis. Gould K.L., EMBO J. 8:4133-4142(1989). Turunen O., J. Biol. Chem. 264:16727-16732(1989). Mungall A.J., Nature 425:805-811(2003).
Form	Rabbit IgG in phosphate buffered saline (without Mg ²⁺ and Ca ²⁺), pH 7.4, 150mM NaCl, 0.02% sodium azide and 50% glycerol.
Purification Method	The antibody was affinity-purified from rabbit antiserum by affinity-chromatography using epitope-specific immunogen.
Clonality	Polyclonal
Alias	Cytovillin; EZRI; p81; VIL2; Villin 2
Product Type	Polyclonal Antibody
Species	Homo sapiens (Human)
Target Names	EZR

Image



Western blot analysis of extracts from K562 cells, using Ezrin (Ab-478) antibody.



Western blot analysis of extracts from COS7 cells (Lane 2), using Ezrin (Ab-478) antibody. The lane on the left is treated with synthesized peptide.