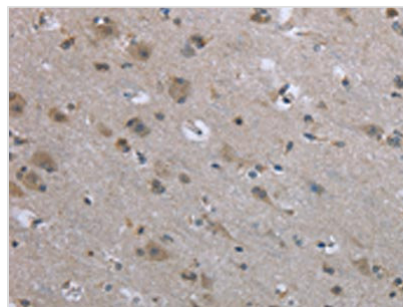




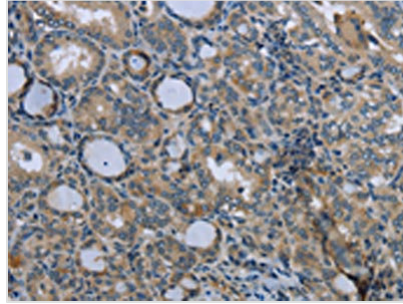
# EGFL8 Antibody

<b>Product Code</b>	CSB-PA699881
<b>Storage</b>	Upon receipt, store at -20°C or -80°C. Avoid repeated freeze.
<b>Uniprot No.</b>	Q99944
<b>Immunogen</b>	Fusion protein of Human EGFL8
<b>Raised In</b>	Rabbit
<b>Species Reactivity</b>	Human,Mouse,Rat
<b>Tested Applications</b>	ELISA,IHC;ELISA:1:2000-1:5000,IHC:1:50-1:200
<b>Relevance</b>	The epidermal growth factor (EGF) repeat-containing proteins constitute an expanding family of proteins that are involved in several cellular activities, such as blood coagulation, fibrinolysis, cell adhesion, and neural and vertebrate development. EGFL8 (EGF-like domain-containing protein 8), also known as C6orf8, NG3 and VE-statin-2, is a 293 amino acid secreted protein that contains two EGF-like domains and one EMI domain. Via its EGF and EMI domains, EGFL8 may participate in protein-protein interactions that correlate with cellular proliferation and developmental signaling events. In mice, EGFL8 is expressed predominately in brain, kidney, lung and thymus.
<b>Form</b>	Liquid
<b>Conjugate</b>	Non-conjugated
<b>Storage Buffer</b>	-20°C, pH7.4 PBS, 0.05% NaN <sub>3</sub> , 40% Glycerol
<b>Purification Method</b>	Antigen affinity purification
<b>Isotype</b>	IgG
<b>Alias</b>	EGF-like-domain, multiple 8
<b>Species</b>	Homo sapiens (Human)
<b>Target Names</b>	EGFL8

## Image



The image on the left is immunohistochemistry of paraffin-embedded Human brain tissue using CSB-PA699881(EGFL8 Antibody) at dilution 1/40, on the right is treated with fusion protein. (Original magnification: x200)



The image on the left is immunohistochemistry of paraffin-embedded Human thyroid cancer tissue using CSB-PA699881(EGFL8 Antibody) at dilution 1/40, on the right is treated with fusion protein. (Original magnification: ×200)