



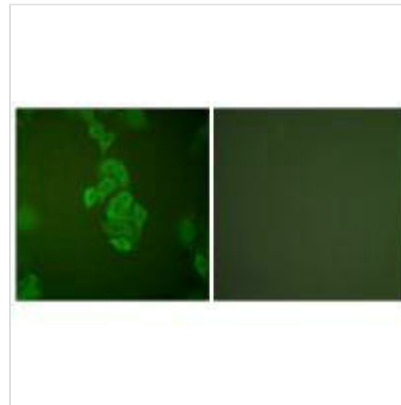
ENO2 Antibody

Product Code	CSB-PA790690
Storage	Upon receipt, store at -20°C or -80°C. Avoid repeated freeze.
Uniprot No.	P09104
Immunogen	Synthesized peptide derived from Human NSE.
Raised In	Rabbit
Species Reactivity	Human, Mouse
Specificity	The antibody detects endogenous levels of total NSE protein.
Tested Applications	ELISA, WB, IHC, IF; WB: 1:500-1:3000, IHC: 1:50-1:100, IF: 1:100-1:500
Relevance	<p>Has neurotrophic and neuroprotective properties on a broad spectrum of central nervous system (CNS) neurons. Binds, in a calcium-dependent manner, to cultured neocortical neurons and promotes cell survival By similarity. HAMAP-Rule MF_00318</p> <p>RH Stead, J. Neurosci., Dec 1991; 11: 3809. A. Koenig, Vet. Pathol., Jul 2001; 38: 427. Samrad Mehrabi, Chest Meeting Abstracts, Oct 2005; 128: 358S. G Paone, Eur. Respir. J., Jul 1995; 8: 1136 - 1140.</p>
Form	Rabbit IgG in phosphate buffered saline (without Mg ²⁺ and Ca ²⁺), pH 7.4, 150mM NaCl, 0.02% sodium azide and 50% glycerol.
Purification Method	The antibody was affinity-purified from rabbit antiserum by affinity-chromatography using epitope-specific immunogen.
Clonality	Polyclonal
Alias	2-phospho-D-glycerate hydro-lyase; ENOG; Enolase 2; Gamma enolase; Neural enolase
Product Type	Polyclonal Antibody
Species	Homo sapiens (Human)
Target Names	ENO2

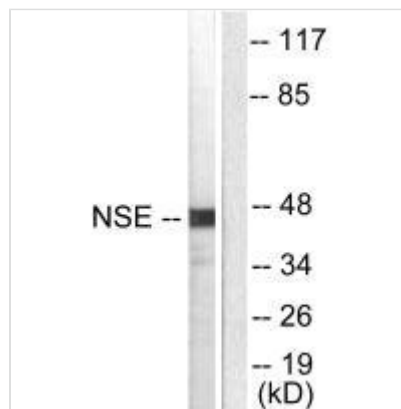
Image



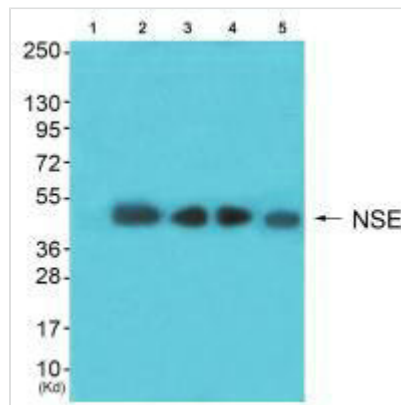
Immunohistochemical analysis of paraffin-embedded human brain tissue using NSE antibody.



Immunofluorescence analysis of A549 cells, using NSE antibody.



Western blot analysis of extracts from HepG2 cells, using NSE antibody.



Western blot analysis of extracts from HeLa cells (Lane 2), colo cells(Lane 3)lbnotHepG2 cells(Lane 4) and 293 cells (Lane 5), using NSE antiobdy. The lane on the left is treated with synthesized peptide.