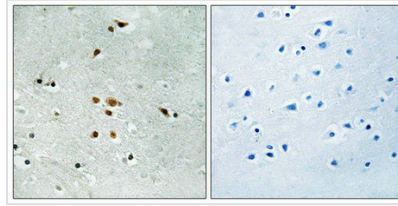




# Phospho-FER (Tyr402) Antibody

<b>Product Code</b>	CSB-PA798299
<b>Storage</b>	Upon receipt, store at -20°C or -80°C. Avoid repeated freeze.
<b>Uniprot No.</b>	P16591
<b>Immunogen</b>	Peptide sequence around phosphorylation site of tyrosine 402(V-N-Y(p)-E-E) derived from Human FER .
<b>Raised In</b>	Rabbit
<b>Species Reactivity</b>	Human,Mouse
<b>Specificity</b>	The antibody detects endogenous levels of FER only when phosphorylated at tyrosine 402.
<b>Tested Applications</b>	ELISA,WB,IHC;WB:1:500-1:1000,IHC:1:50-1:100
<b>Relevance</b>	<p>Fer protein is a member of the FPS/FES family of nontransmembrane receptor tyrosine kinases. It regulates cell-cell adhesion and mediates signaling from the cell surface to the cytoskeleton via growth factor receptors.</p> <p>Hao Q.-L., Mol. Cell. Biol. 9:1587-1593(1989).  Lee S.-T., Oncogene 8:3403-3410(1993).  Krolewski J.J., Oncogene 5:277-282(1990).</p>
<b>Form</b>	Rabbit IgG in phosphate buffered saline (without Mg <sup>2+</sup> and Ca <sup>2+</sup> ), pH 7.4, 150mM NaCl, 0.02% sodium azide and 50% glycerol.
<b>Purification Method</b>	Antibodies were produced by immunizing rabbits with synthetic phosphopeptide and KLH conjugates. Antibodies were purified by affinity-chromatography using epitope-specific phosphopeptide. Non-phospho specific antibodies were removed by chromatogramphy usi
<b>Clonality</b>	Polyclonal
<b>Alias</b>	FER; FERT2; TYK3; p94-FER;
<b>Product Type</b>	Polyclonal Antibody
<b>Species</b>	Homo sapiens (Human)
<b>Target Names</b>	FER
<b>Image</b>	 <p>Western blot analysis of extracts from JK cells (Lane 2) and COS7 cells (Lane 3), using FER (Phospho-Tyr402) Antibody. The lane on the left is treated with antigen-specific peptide.</p>



Immunohistochemical analysis of paraffin-embedded human brain tissue using FER (Phospho-Tyr402) antibody (left) or the same antibody preincubated with blocking peptide (right).

---

**Product Modify****Phospho-Tyr402**