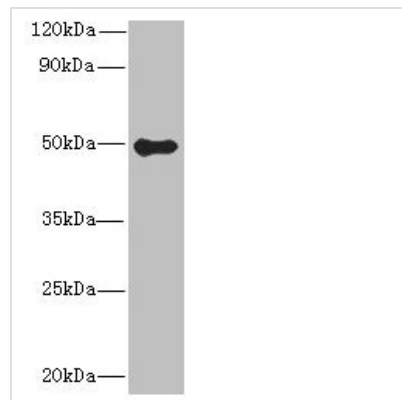




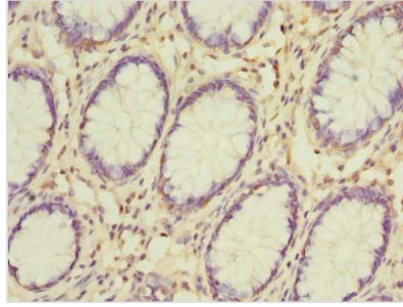
# GSDMB Antibody

<b>Product Code</b>	CSB-PA823445LA01HU
<b>Storage</b>	Upon receipt, store at -20°C or -80°C. Avoid repeated freeze.
<b>Uniprot No.</b>	Q8TAX9
<b>Immunogen</b>	Recombinant Human Gasdermin-B protein (63-310AA)
<b>Raised In</b>	Rabbit
<b>Species Reactivity</b>	Human
<b>Tested Applications</b>	ELISA, WB, IHC; Recommended dilution: WB:1:500-1:2000, IHC:1:20-1:200
<b>Relevance</b>	May play a role as secretory or metabolic product involved in secretory pathway. May also play a role in achieving and maintaining the final differentiation state of epithelial cells.
<b>Form</b>	Liquid
<b>Conjugate</b>	Non-conjugated
<b>Storage Buffer</b>	Preservative: 0.03% Proclin 300 Constituents: 50% Glycerol, 0.01M PBS, PH 7.4
<b>Purification Method</b>	>95%, Protein G purified
<b>Isotype</b>	IgG
<b>Clonality</b>	Polyclonal
<b>Alias</b>	Gasdermin-B (Gasdermin-like protein), GSDMB, GSDML
<b>Species</b>	Human
<b>Research Area</b>	Cell Biology
<b>Target Names</b>	GSDMB

## Image



Western blot  
 All lanes: GSDMB antibody at 8µg/ml + Colo320 whole cell lysate  
 Secondary  
 Goat polyclonal to rabbit IgG at 1/10000 dilution  
 Predicted band size: 47, 46, 48, 19 kDa  
 Observed band size: 47 kDa



Immunohistochemistry of paraffin-embedded human colon cancer using CSB-PA823445LA01HU at dilution of 1:100