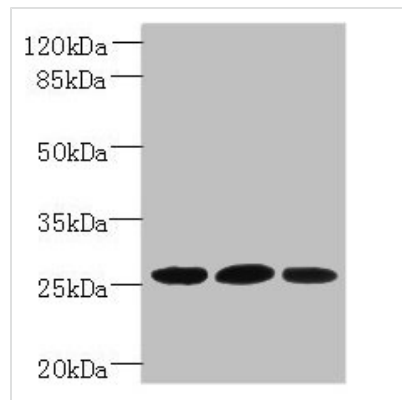




Plet1 Antibody

Product Code	CSB-PA851843HA01MO
Storage	Upon receipt, store at -20°C or -80°C. Avoid repeated freeze.
Uniprot No.	Q8VEN2
Immunogen	Recombinant Mouse Placenta-expressed transcript 1 protein (28-218AA)
Raised In	Rabbit
Species Reactivity	Mouse, Human
Tested Applications	ELISA, WB, IHC; Recommended dilution: WB:1:500-1:2000, IHC:1:20-1:200
Relevance	Modulates leading keratinocyte migration and cellular adhesion to matrix proteins during a wound-healing response and promotes wound repair. May play a role during trichilemmal differentiation of the hair follicle.
Form	Liquid
Conjugate	Non-conjugated
Storage Buffer	Preservative: 0.03% Proclin 300 Constituents: 50% Glycerol, 0.01M PBS, PH 7.4
Purification Method	>95%, Protein G purified
Isotype	IgG
Clonality	Polyclonal
Alias	Placenta-expressed transcript 1 protein (Antigen mAgK114), Plet1
Species	Mouse
Research Area	Others
Target Names	Plet1

Image



Western blot

All lanes: Plet1 antibody at 5µg/ml

Lane 1: L929 whole cell lysate

Lane 2: U251 whole cell lysate

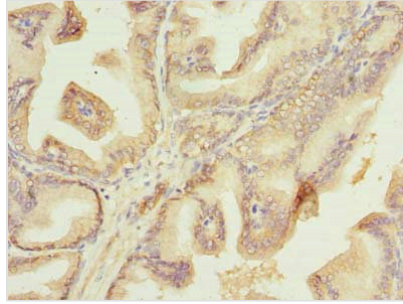
Lane 3: Mouse muscle tissue

Secondary

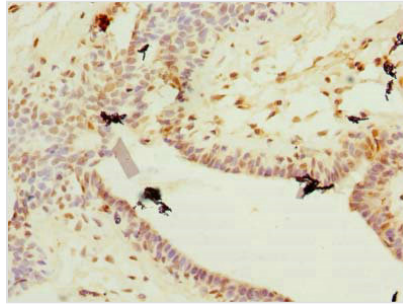
Goat polyclonal to rabbit IgG at 1/10000 dilution

Predicted band size: 26, 21 kDa

Observed band size: 26 kDa



Immunohistochemistry of paraffin-embedded human prostate cancer using CSB-PA851843HA01MO at dilution of 1:100



Immunohistochemistry of paraffin-embedded human breast cancer using CSB-PA851843HA01MO at dilution of 1:100