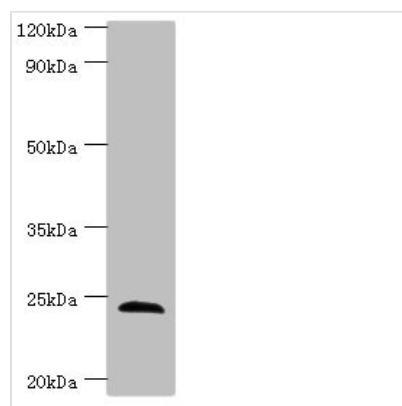




# SOST Antibody

<b>Product Code</b>	CSB-PA858415ESR2HU
<b>Storage</b>	Upon receipt, store at -20°C or -80°C. Avoid repeated freeze.
<b>Uniprot No.</b>	Q9BQB4
<b>Immunogen</b>	Recombinant Human Sclerostin protein (24-213AA)
<b>Raised In</b>	Rabbit
<b>Species Reactivity</b>	Human
<b>Tested Applications</b>	ELISA, WB, IHC; Recommended dilution: WB:1:500-1:2000, IHC:1:20-1:200
<b>Relevance</b>	Negative regulator of bone growth that acts through inhibition of Wnt signaling and bone formation.
<b>Form</b>	Liquid
<b>Conjugate</b>	Non-conjugated
<b>Storage Buffer</b>	PBS with 0.02% sodium azide, 50% glycerol, pH7.3.
<b>Purification Method</b>	Antigen Affinity Purified
<b>Isotype</b>	IgG
<b>Clonality</b>	Polyclonal
<b>Alias</b>	Sclerostin, SOST
<b>Species</b>	Human
<b>Research Area</b>	Stem Cells
<b>Target Names</b>	SOST

## Image



### Western blot

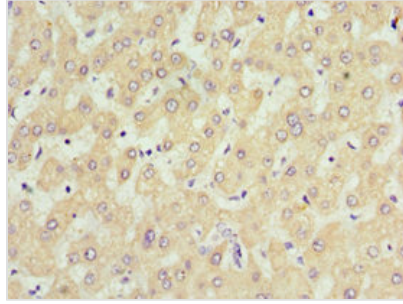
All lanes: SOST antibody at 4µg/ml + Hela whole cell lysate

Secondary

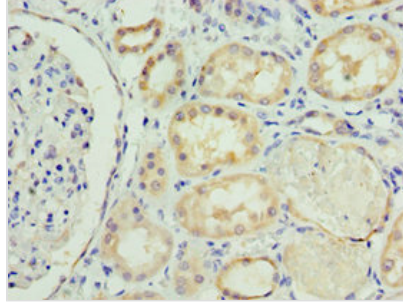
Goat polyclonal to rabbit IgG at 1/10000 dilution

Predicted band size: 24 kDa

Observed band size: 24 kDa



Immunohistochemistry of paraffin-embedded human liver tissue using CSB-PA858415ESR2HU at dilution of 1:100



Immunohistochemistry of paraffin-embedded human kidney tissue using CSB-PA858415ESR2HU at dilution of 1:100